

## Anti-GIT1 Antibody

Catalog Number: A02140

### About GIT1

GTPase-activating protein for the ADP ribosylation factor family. May serve as a scaffold to bring together molecules to form signaling modules controlling vesicle trafficking, adhesion and cytoskeletal organization. Increases the speed of cell migration, as well as the size and rate of formation of protrusions, possibly by targeting PAK1 to adhesions and the leading edge of lamellipodia. Sequesters inactive non-tyrosine-phosphorylated paxillin in cytoplasmic complexes.

Premont R.T., J. Biol. Chem. 275:22373-22380(2000).

The MGC Project Team, Genome Res. 14:2121-2127(2004).

Premont R.T., Proc. Natl. Acad. Sci. U.S.A. 95:14082-14087(1998).

### Overview

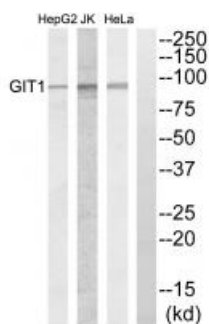
Product Name	Anti-GIT1 Antibody
Reactive Species	Human
Description	Boster Bio Anti-GIT1 Antibody (Catalog # A02140). Tested in WB, IHC applications. This antibody reacts with Human.
Application	IHC, WB
Clonality	Polyclonal
Formulation	Rabbit IgG in phosphate buffered saline (without Mg <sup>2+</sup> and Ca <sup>2+</sup> ), pH 7.4, 150mM NaCl, 0.02% sodium azide and 50% glycerol.
Storage Instructions	Store at -20°C for one year. For short term storage and frequent use, store at 4°C for up to one month. Avoid repeated freeze-thaw cycles.
Host	Rabbit
Uniprot ID	Q9Y2X7

### Technical Details

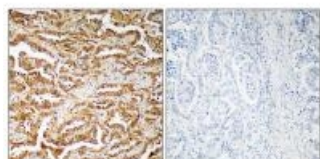
Immunogen	Synthesized peptide derived from C-terminal of human GIT1.
Predicted Reactive Species	Boar, Bovine, Canine, Golden Hamster
Isotype	IgG
Form	Liquid
Concentration	1 mg/ml

Purification	The antibody was affinity-purified from rabbit antiserum by affinity-chromatography using epitope-specific immunogen.
Suggested Dilutions	<p>Dilute the sample so that the expected range of concentrations fall within the detection range of this kit.</p> <p>If the expected range of concentration is unknown, a pilot test should be conducted to decide the optimal dilution ratio for your samples.</p> <p>Some PubMed article(s) citing the expression level of this target are as follows:</p> <p>Boster Bio's internal QC testing used:</p> <p>Western blotting: 1:500~1:3000</p> <p>Immunohistochemistry: 1:50~1:100</p>

## Anti-GIT1 Antibody (A02140) Images



Western blot analysis of extracts from HeLa cells, Jurkat cells and HepG2 cells, using GIT1 antibody A02140.



Immunohistochemistry analysis of paraffin-embedded human lung carcinoma tissue, using GIT1 antibody A02140.

## Submit a product review to Biocompare.com

Submit a review of this product to Biocompare.com to receive a \$20 Amazon.com giftcard! Your reviews help your fellow scientists make the right decisions. Thank you for your contribution.



Anti-GIT1 Antibody