

Anti-Acetyl-EF-1 alpha1/2 (K41) EEF1A1 Antibody

Catalog Number: A02141

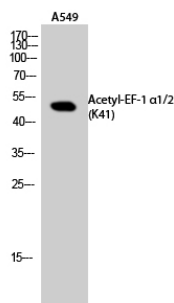
Overview

Product Name	Anti-Acetyl-EF-1 alpha1/2 (K41) EEF1A1 Antibody
Reactive Species	Human, Mouse, Rat
Description	Boster Bio Anti-Acetyl-EF-1 alpha1/2 (K41) EEF1A1 Antibody catalog # A02141. Tested in WB applications. This antibody reacts with Human, Mouse, Rat.
Application	WB
Clonality	Polyclonal
Formulation	Liquid in PBS containing 50% glycerol, 0.5% BSA and 0.02% sodium azide.
Storage Instructions	Store at -20°C for one year. For short term storage and frequent use, store at 4°C for up to one month. Avoid repeated freeze-thaw cycles.
Host	Rabbit
Uniprot ID	P68104

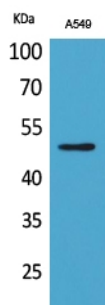
Technical Details

Immunogen	Synthesized peptide derived from the C-terminal region of human GIT1. at AA range: 530-610
Predicted Reactive Species	Bovine, Canine, Equine, Pig, Rabbit
Isotype	IgG
Form	Liquid
Concentration	This antibody's concentration is >0.5mg/ml.
Purification	Immunogen affinity purified
Suggested Dilutions	<p>Dilute the sample so that the expected range of concentrations fall within the detection range of this kit.</p> <p>If the expected range of concentration is unknown, a pilot test should be conducted to decide the optimal dilution ratio for your samples.</p> <p>Some PubMed article(s) citing the expression level of this target are as follows:</p> <p>Boster Bio's internal QC testing used:</p> <p>WB, 1:500-1:2000</p>

Anti-Acetyl-EF-1 alpha1/2 (K41) EEF1A1 Antibody (A02141) Images



Western Blot (WB) analysis of A549 cells using Acetyl-EF-1 alpha1/2 (K41) Polyclonal antibody.



Western Blot (WB) analysis of A549 cells using Acetyl-EF-1 alpha1/2 (K41) Polyclonal antibody.

Submit a product review to Biocompare.com

Submit a review of this product to Biocompare.com to receive a \$20 Amazon.com giftcard! Your reviews help your fellow scientists make the right decisions. Thank you for your contribution.



Anti-Acetyl-EF-1 alpha1/2 (K41) EEF1A1 Antibody