

## Anti-Elongation factor 1-alpha 1 eEF1A1 Antibody

Catalog Number: A02141-1

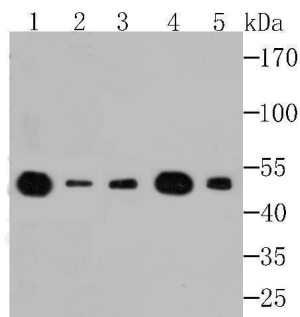
### Overview

Product Name	Anti-Elongation factor 1-alpha 1 eEF1A1 Antibody
Reactive Species	Human, Mouse, Rat
Description	Boster Bio Anti-Elongation factor 1-alpha 1 eEF1A1 Antibody catalog # A02141-1. Tested in WB,ICC,IF,IHC,Flow Cytometry,IP applications. This antibody reacts with Human,Mouse,Rat.
Application	Flow Cytometry, IP, IF, IHC, ICC, WB
Clonality	Polyclonal
Formulation	Rabbit IgG, 1mg/ml in PBS with 0.02% sodium azide, 50% glycerol, pH7.2
Storage Instructions	Store at -20°C for one year. For short term storage and frequent use, store at 4°C for up to one month. Avoid repeated freeze-thaw cycles.
Host	Rabbit
Uniprot ID	P68104

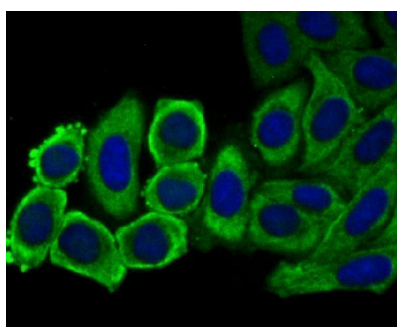
### Technical Details

Immunogen	Recombinant protein
Isotype	IgG
Form	Liquid
Concentration	1 mg/ml
Purification	ProA affinity purified
Suggested Dilutions	WB: 1:500-1:1,000 ICC: 1:50-1:200 IHC: 1:50-1:200 FC: 1:50-1:100

## Anti-Elongation factor 1-alpha 1 eEF1A1 Antibody (A02141-1) Images



Western blot analysis of eEF1A1 on different lysates using anti-eEF1A1 antibody at 1/500 dilution. Positive control:  
Lane 1: Rat brain tissue Lane 2: Mouse skeletal muscle Lane 3: Mouse cerebellum Lane 4: Rat skin Lane 5: Daudi



ICC staining eEF1A1 in HepG2 cells (green). The nuclear counter stain is DAPI (blue). Cells were fixed in paraformaldehyde, permeabilised with 0.25% Triton X100/PBS.

### Submit a product review to [Biocompare.com](https://www.biocompare.com)

Submit a review of this product to [Biocompare.com](https://www.biocompare.com) to receive a \$20 Amazon.com giftcard! Your reviews help your fellow scientists make the right decisions. Thank you for your contribution.



Anti-Elongation factor 1-alpha 1 eEF1A1 Antibody

For Research Use Only. Not for use in diagnostic procedures.