

Anti-SMC1 SMC1A Monoclonal Antibody

Catalog Number: A02148-2

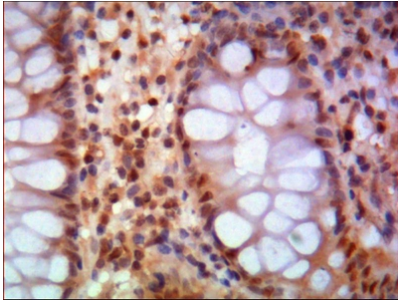
Overview

Product Name	Anti-SMC1 SMC1A Monoclonal Antibody
Reactive Species	Human, Mouse, Pig, Rat
Description	Boster Bio Anti-SMC1 SMC1A Monoclonal Antibody catalog # A02148-2. Tested in WB, IHC, IF, Flow Cytometry applications. This antibody reacts with Human, Mouse, Rat, Pig.
Application	Flow Cytometry, IF, IHC, WB
Clonality	Monoclonal 5B6
Formulation	Purified mouse monoclonal in buffer containing 0.1M Tris-Glycine (pH 7.4, 150 mM NaCl) with 0.2% sodium azide, 50% glycerol.
Storage Instructions	Store at -20°C for one year. For short term storage and frequent use, store at 4°C for up to one month. Avoid repeated freeze-thaw cycles.
Host	Mouse
Uniprot ID	Q14683

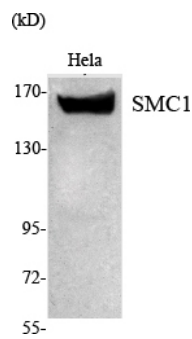
Technical Details

Immunogen	Purified recombinant human SMC1 (N-terminus) protein fragments expressed in E.coli.
Isotype	IgG
Form	Liquid
Concentration	1 mg/ml
Purification	Protein A purified
Suggested Dilutions	WB 1:1000-1:2000 IHC 1:500-1:1000 FC 1:100-1:200 IF 1:50-200

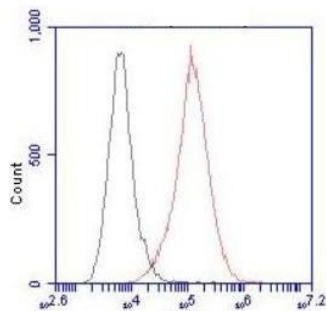
Anti-SMC1 SMC1A Monoclonal Antibody (A02148-2) Images



Immunohistochemistry (IHC) analysis of paraffin-embedded Human Colon using SMC1 Monoclonal antibody.



Western Blot (WB) analysis using SMC1 Monoclonal antibody against HeLa nuclear extract.



Flow cytometric (FCM) analysis of HeLa cells stained with SMC1 Monoclonal antibody (red), followed by FITC-conjugated goat anti-Mouse IgG. Black line histogram represents the isotype control, normal Mouse IgG.

2 Publications Citing This Product

1. PubMed ID: 10.3760/cma.j.issn.0366-6999.2011.06.020, Imaging of atherosclerotic aorta of rabbit model by detection of plaque inflammation with fluorine-18 fluorodeoxyglucose positron emission tomography/computed tomography
2. PubMed ID: 10.1016/j.atherosclerosis.2009.04.014, Chymase activity is closely related with plaque vulnerability in a hamster model of atherosclerosis

Visit bosterbio.com/anti-smc1-antibody-a02148-2-boster.html to see all 2 publications.

Submit a product review to Biocompare.com

Submit a review of this product to Biocompare.com to receive a \$20 Amazon.com giftcard! Your reviews help your fellow scientists make the right decisions. Thank you for your contribution.



Anti-SMC1 SMC1A Monoclonal Antibody

For Research Use Only. Not for use in diagnostic procedures.