

Anti-SMC 1 (phospho-S957) SMC1A Antibody

Catalog Number: A02148S957-1

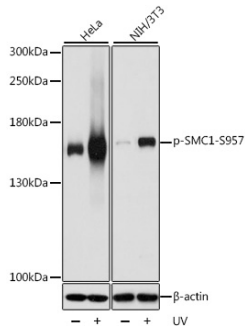
Overview

Product Name	Anti-SMC 1 (phospho-S957) SMC1A Antibody
Reactive Species	Human, Mouse, Rat
Description	Boster Bio Anti-SMC 1 (phospho-S957) SMC1A Antibody catalog # A02148S957-1. Tested in WB,IHC,IP applications. This antibody reacts with Human,Mouse,Rat.
Application	IP, IHC, WB
Clonality	Polyclonal
Formulation	Rabbit IgG, 1mg/ml in PBS with 0.02% sodium azide, 50% glycerol, pH7.2
Storage Instructions	Store at -20°C for one year. For short term storage and frequent use, store at 4°C for up to one month. Avoid repeated freeze-thaw cycles.
Host	Rabbit
Uniprot ID	Q14683

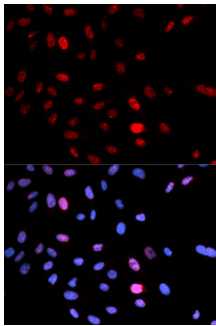
Technical Details

Immunogen	A synthetic phosphorylated peptide around S957 of human SMC1A(NP_006297.2).
Isotype	IgG
Form	Liquid
Concentration	1 mg/ml
Purification	The antibody was affinity-purified from rabbit antiserum by affinity-chromatography using epitope-specific immunogen and the purity is > 95% (by SDS-PAGE).
Suggested Dilutions	WB: 1:500-1:2000 IHC: 1:50-1:200 IP: 1:50-1:100

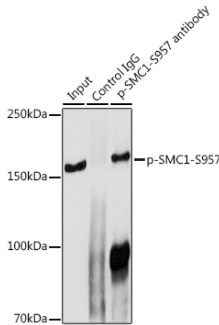
Anti-SMC 1 (phospho-S957) SMC1A Antibody (A02148S957-1) Images



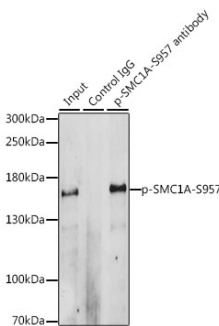
Western blot analysis of extracts of various cell lines, using Phospho-SMC1-S957 antibody at 1:1000 dilution. HeLa and NIH/3T3 cells were treated by UV for 15-30 minutes. Secondary antibody: HRP Goat Anti-Rabbit IgG at 1:10000 dilution. Lysates/proteins: 25ug per lane. Blocking buffer: 3% BSA. Detection: ECL Basic Kit. Exposure time: 3s.



Immunohistochemistry of paraffin-embedded human colon carcinoma using Phospho-SMC1-S957 Rabbit pAb at dilution of 1:100. Perform high pressure antigen retrieval with 10 mM citrate buffer pH 6.0 before commencing with IHC staining protocol.



Immunoprecipitation analysis of 300ug extracts of HeLa cells using 3ug Phospho-SMC1-S957 antibody. Western blot was performed from the immunoprecipitate using Phospho-SMC1-S957 antibody at a dilution of 1:1000.



Western blot analysis of extracts of HeLa cells, using Phospho-SMC1-S957 pAb at 1:1000 dilution or SMC1A antibody. HeLa cells were treated by UV at room temperature for 15-30 minutes. Secondary antibody: HRP Goat Anti-Rabbit IgG at 1:10000 dilution. Lysates/proteins: 25ug per lane. Blocking buffer: 3% BSA. Detection: ECL Basic Kit. Exposure time: 3s.

Submit a product review to Biocompare.com

Submit a review of this product to Biocompare.com to receive a \$20 Amazon.com giftcard! Your reviews help your fellow scientists make the right decisions. Thank you for your contribution.



Anti-SMC 1 (phospho-S957) SMC1A Antibody

For Research Use Only. Not for use in diagnostic procedures.