

Anti-SMC1 (Phospho-S957) SMC1A Antibody

Catalog Number: A02148S957-2

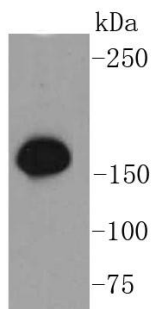
Overview

Product Name	Anti-SMC1 (Phospho-S957) SMC1A Antibody
Reactive Species	Human
Description	Boster Bio Anti-SMC1 (Phospho-S957) SMC1A Antibody catalog # A02148S957-2. Tested in WB,IHC,ICC applications. This antibody reacts with Human.
Application	IHC, ICC, WB
Clonality	Polyclonal
Formulation	Rabbit IgG, 1mg/ml in PBS with 0.02% sodium azide, 50% glycerol, pH7.2
Storage Instructions	Store at -20°C for one year. For short term storage and frequent use, store at 4°C for up to one month. Avoid repeated freeze-thaw cycles.
Host	Rabbit
Uniprot ID	Q14683

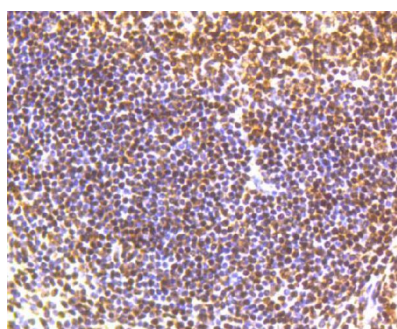
Technical Details

Immunogen	Synthetic phospho-peptide corresponding to residues surrounding Ser957 of human SMC1.
Isotype	IgG
Form	Liquid
Concentration	1 mg/ml
Purification	ProA affinity purified
Suggested Dilutions	WB: 1:1,000-1:5,000 IHC: 1:50-1:200 ICC: 1:50-1:200

Anti-SMC1 (Phospho-S957) SMC1A Antibody (A02148S957-2) Images



Western blot analysis of SMC1(phospho S957) on Hela cells lysates using anti-phospho-SMC1(S957) antibody at 1/1,000 dilution.



Immunohistochemical analysis of paraffin-embedded human tonsil tissue using anti-phospho-SMC1(S957) antibody. Counter stained with hematoxylin.

Submit a product review to [Biocompare.com](https://www.biocompare.com)

Submit a review of this product to [Biocompare.com](https://www.biocompare.com) to receive a \$20 Amazon.com giftcard! Your reviews help your fellow scientists make the right decisions. Thank you for your contribution.



Anti-SMC1 (Phospho-S957) SMC1A Antibody

For Research Use Only. Not for use in diagnostic procedures.