

Anti-Trem2 Antibody Picoband®

Catalog Number: A02150-3

About Trem2

Triggering receptor expressed on myeloid cells 2 also known as TREM-2 is a protein that in humans is encoded by the TREM2 gene. This gene encodes a membrane protein that forms a receptor signaling complex with the TYRO protein tyrosine kinase binding protein. The encoded protein functions in immune response and may be involved in chronic inflammation by triggering the production of constitutive inflammatory cytokines. Defects in this gene are a cause of polycystic lipomembranous osteodysplasia with sclerosing leukoencephalopathy (PLOS). Alternative splicing results in multiple transcript variants encoding different isoforms.

Overview

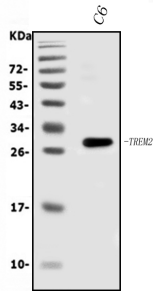
| | |
|----------------------|---------------------------------------------------------------------------------------------------------------------------------------------------------------------------------------------------------------------------------------------------------------------------------------------------------------------------------------------------------------------------------------------------------------------------------|
| Product Name | Anti-Trem2 Antibody Picoband® |
| Reactive Species | Rat |
| Description | Boster Bio Anti-Trem2 Antibody Picoband® catalog # A02150-3. Tested in ELISA, Flow Cytometry, WB applications. This antibody reacts with Rat. The brand Picoband indicates this is a premium antibody that guarantees superior quality, high affinity, and strong signals with minimal background in Western blot applications. Only our best-performing antibodies are designated as Picoband, ensuring unmatched performance. |
| Application | ELISA, Flow Cytometry, WB |
| Clonality | Polyclonal |
| Formulation | Each vial contains 4mg Trehalose, 0.9mg NaCl, 0.2mg Na ₂ HPO ₄ , 0.005mg NaN ₃ . |
| Storage Instructions | Store at -20°C for one year from date of receipt. After reconstitution, at 4°C for one month. It can also be aliquotted and stored frozen at -20°C for six months. Avoid repeated freeze-thaw cycles. |
| Host | Rabbit |
| Uniprot ID | D3ZZ89 |

Technical Details

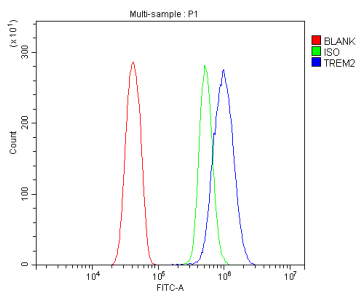
| | |
|-------------------------------|-------------------------------------------------------------------------------------------------|
| Immunogen | E.coli-derived rat Trem2 recombinant protein (Position: L19-D131). |
| Recommended Detection Systems | Boster recommends Enhanced Chemiluminescent Kit with anti-Rabbit IgG (EK1002) for Western blot. |
| Cross Reactivity | No cross-reactivity with other proteins. |
| Isotype | Rabbit IgG |
| Form | Lyophilized |
| Concentration | Adding 0.2 ml of distilled water will yield a concentration of 500 ug/ml. |

| | |
|---------------------|------------------------------------------------------------------------------------------------------------------------|
| Purification | Immunogen affinity purified. |
| Suggested Dilutions | Western blot, 0.25-0.5ug/ml, Rat Flow Cytometry (Fixed), 1-3ug/1x10 ⁶ cells, Rat ELISA, 0.1-0.5ug/ml, |

Anti-Trem2 Antibody Picoband® (A02150-3) Images



Western blot analysis of Trem2 using anti-Trem2 antibody (A02150-3). Electrophoresis was performed on a 5-20% SDS-PAGE gel at 70V (Stacking gel) / 90V (Resolving gel) for 2-3 hours. The sample well of each lane was loaded with 50ug of sample under reducing conditions. Lane 1: rat C6 whole cell lysates. After Electrophoresis, proteins were transferred to a Nitrocellulose membrane at 150mA for 50-90 minutes. Blocked the membrane with 5% Non-fat Milk/ TBS for 1.5 hour at RT. The membrane was incubated with rabbit anti-Trem2 antigen affinity purified polyclonal antibody (Catalog # A02150-3) at 0.5 ug/mL overnight at 4°C, then washed with TBS-0.1%Tween 3 times with 5 minutes each and probed with a goat anti-rabbit IgG-HRP secondary antibody at a dilution of 1:5000 for 1.5 hour at RT. The signal is developed using an Enhanced Chemiluminescent detection (ECL) kit (Catalog # EK1002) with Tanon 5200 system. A specific band was detected for Trem2 at approximately 28KD. The expected band size for Trem2 is at 28KD.



Flow Cytometry analysis of RH35 cells using anti-Trem2 antibody (A02150-3). Overlay histogram showing RH35 cells stained with A02150-3 (Blue line). The cells were fixed with 4% paraformaldehyde and blocked with 10% normal goat serum. And then incubated with rabbit anti-Trem2 Antibody (A02150-3, 1ug/1x10⁶ cells) for 30 min at 20°C. DyLight®488 conjugated goat anti-rabbit IgG (BA1127, 5-10ug/1x10⁶ cells) was used as secondary antibody for 30 minutes at 20°C. Isotype control antibody (Green line) was rabbit IgG (1ug/1x10⁶) used under the same conditions. Unlabelled sample without incubation with primary antibody and secondary antibody (Red line) was used as a blank control.

Submit a product review to Biocompare.com

Submit a review of this product to Biocompare.com to receive a \$20 Amazon.com giftcard! Your reviews help your fellow scientists make the right decisions. Thank you for your contribution.



Anti-Trem2 Antibody

For Research Use Only. Not for use in diagnostic procedures.