

Anti-PTGER4 Antibody (Center)

Catalog Number: A02153

About PTGER4

Receptor for prostaglandin E2 (PGE2). The activity of this receptor is mediated by G(s) proteins that stimulate adenylate cyclase. Has a relaxing effect on smooth muscle. May play an important role in regulating renal hemodynamics, intestinal epithelial transport, adrenal aldosterone secretion, and uterine function.

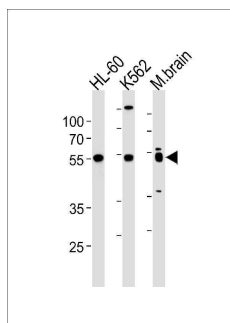
Overview

Product Name	Anti-PTGER4 Antibody (Center)
Reactive Species	Human, Mouse
Description	Boster Bio Anti-PTGER4 Antibody (Center) (Catalog # A02153). Tested in IHC-P, WB application(s). This antibody reacts with Human, Mouse.
Application	IHC-P, WB
Clonality	Polyclonal
Formulation	Purified polyclonal antibody supplied in PBS with 0.09% (W/V) sodium azide.
Storage Instructions	Maintain refrigerated at 2-8°C for up to 2 weeks. For long-term storage, store at -20°C in small aliquots to prevent freeze-thaw cycles.
Host	Rabbit
Uniprot ID	P35408

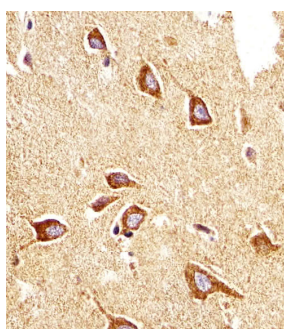
Technical Details

Immunogen	This PTGER4 antibody is generated from rabbits immunized with a KLH conjugated synthetic peptide between 242-269 amino acids from the Central region of human PTGER4.
Predicted Reactive Species	Bovine, Rabbit, Rat
Isotype	Rabbit IgG
Purification	This antibody is purified through a protein A column, followed by peptide affinity purification.
Suggested Dilutions	WB: 1:1000 IHC-P: 1:25

Anti-PTGER4 Antibody (Center) (A02153) Images



PTGER4 Antibody (Center) western blot analysis in HL-60, K562 cell line and mouse brain lysates (35ug/lane). This demonstrates the PTGER4 antibody detected the PTGER4 protein (arrow).



Immunohistochemical analysis of paraffin-embedded H. brain section using PTGER4 Antibody (Center). A02153 was diluted at 1:25 dilution. A undiluted biotinylated goat polyvalent antibody was used as the secondary, followed by DAB staining.

Submit a product review to [Biocompare.com](https://www.biocompare.com)

Submit a review of this product to [Biocompare.com](https://www.biocompare.com) to receive a \$20 Amazon.com giftcard! Your reviews help your fellow scientists make the right decisions. Thank you for your contribution.



Anti-PTGER4 Antibody (Center)

For Research Use Only. Not for use in diagnostic procedures.