

Anti-Sentrin-specific protease 1 SENP1 Antibody

Catalog Number: A02156

About SENP1

Protease that catalyzes two essential functions in the SUMO pathway: processing of full-length SUMO1, SUMO2 and SUMO3 to their mature forms and deconjugation of SUMO1, SUMO2 and SUMO3 from targeted proteins. Deconjugates SUMO1 from HIPK2. Deconjugates SUMO1 from HDAC1 and BHLHE40/DEC1, which decreases its transcriptional repression activity. Deconjugates SUMO1 from CLOCK, which decreases its transcriptional activation activity.

Taihei Yamaguchi, Mol. Cell. Biol., Jun 2005; 25: 5171 - 5182.

Jinke Cheng, Mol. Cell. Biol., Jul 2004; 24: 6021 - 6028.

Molly A. Brewer, AACR Meeting Abstracts, Mar 2004; 2004: 1006.

Imke M. Veltman, Hum. Mol. Genet., Jul 2005; 14: 1955 - 1963.

Overview

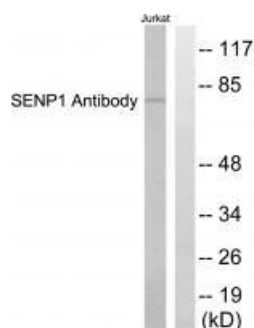
Product Name	Anti-Sentrin-specific protease 1 SENP1 Antibody
Reactive Species	Human
Description	Boster Bio Anti-Sentrin-specific protease 1 SENP1 Antibody (Catalog # A02156). Tested in WB, IHC applications. This antibody reacts with Human.
Application	IHC, WB
Clonality	Polyclonal
Formulation	Rabbit IgG in phosphate buffered saline (without Mg ²⁺ and Ca ²⁺), pH 7.4, 150mM NaCl, 0.02% sodium azide and 50% glycerol.
Storage Instructions	Store at -20°C for one year. For short term storage and frequent use, store at 4°C for up to one month. Avoid repeated freeze-thaw cycles.
Host	Rabbit
Uniprot ID	Q9P0U3

Technical Details

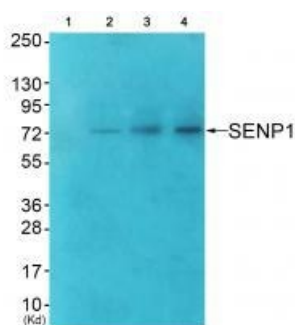
Immunogen	Synthesized peptide derived from N-terminal of human SENP1.
Predicted Reactive Species	Boar, Bovine, Canine, Golden Hamster
Isotype	IgG
Form	Liquid
Concentration	1 mg/ml

Purification	The antibody was affinity-purified from rabbit antiserum by affinity-chromatography using epitope-specific immunogen.
Suggested Dilutions	<p>Dilute the sample so that the expected range of concentrations fall within the detection range of this kit.</p> <p>If the expected range of concentration is unknown, a pilot test should be conducted to decide the optimal dilution ratio for your samples.</p> <p>Some PubMed article(s) citing the expression level of this target are as follows:</p> <p>Boster Bio's internal QC testing used:</p> <p>Western blotting: 1:500~1:3000</p> <p>Immunohistochemistry: 1:50~1:100</p>

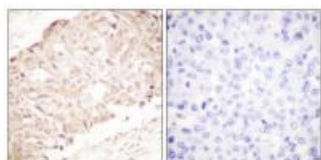
Anti-Sentrin-specific protease 1 SENP1 Antibody (A02156) Images



Western blot analysis of extracts from Jurkat cells, using SENP1 antibody A02156.



Western blot analysis of extracts from JK cells (Lane 2), COS7 cells (Lane 3) and HuvEc cells (Lane 4), using SENP1 antibody A02156. The lane on the left is treated with synthesized peptide.



Immunohistochemistry analysis of paraffin-embedded human breast carcinoma tissue using SENP1 antibody A02156.

Submit a product review to Biocompare.com

Submit a review of this product to Biocompare.com to receive a \$20 Amazon.com giftcard! Your reviews help your fellow scientists make the right decisions. Thank you for your contribution.



Anti-Sentrin-specific protease 1 SENP1 Antibody