

## Anti-Sentrin-specific protease 1 SENP1 Antibody

Catalog Number: A02156-4

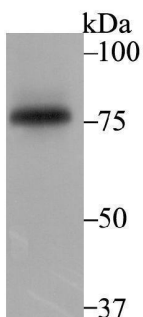
### Overview

Product Name	Anti-Sentrin-specific protease 1 SENP1 Antibody
Reactive Species	Human
Description	Boster Bio Anti-Sentrin-specific protease 1 SENP1 Antibody catalog # A02156-4. Tested in WB,ICC,IF,IHC,Flow Cytometry applications. This antibody reacts with Human.
Application	Flow Cytometry, IF, IHC, ICC, WB
Clonality	Polyclonal
Formulation	Rabbit IgG, 1mg/ml in PBS with 0.02% sodium azide, 50% glycerol, pH7.2
Storage Instructions	Store at -20°C for one year. For short term storage and frequent use, store at 4°C for up to one month. Avoid repeated freeze-thaw cycles.
Host	Rabbit
Uniprot ID	Q9P0U3

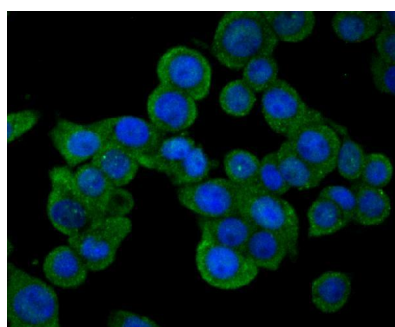
### Technical Details

Immunogen	Recombinant protein within human SENP1 aa 300-500.
Isotype	IgG
Form	Liquid
Concentration	1 mg/ml
Purification	ProA affinity purified
Suggested Dilutions	WB: 1:500-1:2,000 ICC: 1:50-1:200 IHC: 1:50-1:200 FC: 1:50-1:100

## Anti-Sentrin-specific protease 1 SENP1 Antibody (A02156-4) Images



Western blot analysis of SENP1 on K562 cell using anti-SENP1 antibody at 1/1,000 dilution.



ICC staining of SENP1 in LOVO cells (green). The nuclear counter stain is DAPI (blue). Cells were fixed in paraformaldehyde, permeabilised with 0.25% Triton X100/PBS.

### Submit a product review to [Biocompare.com](https://www.biocompare.com)

Submit a review of this product to [Biocompare.com](https://www.biocompare.com) to receive a \$20 Amazon.com giftcard! Your reviews help your fellow scientists make the right decisions. Thank you for your contribution.



Anti-Sentrin-specific protease 1 SENP1 Antibody

For Research Use Only. Not for use in diagnostic procedures.