

Anti-DUSP6 (L76) Antibody

Catalog Number: A02157

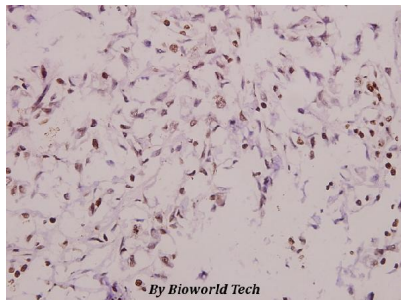
Overview

Product Name	Anti-DUSP6 (L76) Antibody
Reactive Species	Human, Mouse, Rat
Description	Boster Bio Anti-DUSP6 (L76) Antibody catalog # A02157. Tested in IHC applications. This antibody reacts with Human, Mouse, Rat.
Application	IHC
Clonality	Polyclonal
Formulation	Rabbit IgG, 1mg/ml in PBS with 0.02% sodium azide, 50% glycerol, pH7.2
Storage Instructions	Store at -20°C for one year. For short term storage and frequent use, store at 4°C for up to one month. Avoid repeated freeze-thaw cycles.
Host	Rabbit
Uniprot ID	Q16828

Technical Details

Immunogen	Synthetic peptide, corresponding to amino acids 43-98 of Human DUSP6.
Isotype	IgG
Form	Liquid
Concentration	1 mg/ml
Purification	The antibody was affinity-purified from rabbit antiserum by affinity-chromatography using epitope-specific immunogen and the purity is > 95% (by SDS-PAGE).
Suggested Dilutions	IHC: 1:50-1:200

Anti-DUSP6 (L76) Antibody (A02157) Images



Immunohistochemistry (IHC) analyzes of DUSP6 (L76) pAb in paraffin-embedded human breast carcinoma tissue at 1:50.

Submit a product review to Biocompare.com

Submit a review of this product to Biocompare.com to receive a \$20 Amazon.com giftcard! Your reviews help your fellow scientists make the right decisions. Thank you for your contribution.



Anti-DUSP6 (L76) Antibody

For Research Use Only. Not for use in diagnostic procedures.