

Anti-Brachyury Antibody

Catalog Number: A02161

Introduction

The antibody is directed against Thy-1 present in human brain, with small amounts in kidney. The 23.5kD a Thy-1 antigen is absent from human thymocytes and peripheral lymphocytes. Thymus, lymph node and spleen have small populations of F15-42-1-5 positive cells.

This antibody is routinely tested by flow cytometric analysis. Flow cytometry and other applications were tested during antibody development or are reported in the literature.

Application Information

Each lot of this antibody has been quality control tested by flow cytometric analysis of human PBMCs. For flow cytometric staining, the recommended use of this antibody is $\leq 0.5\mu\text{g}$ per 1×10^6 cells in $100\mu\text{l}$ of staining volume. It is strongly suggested that the antibody reactivity be empirically titrated for optimal performance in the application of interest.

About TBXT

NEK2, also called serine/threonine-protein kinase Nek2/NimA-related protein kinase 2, NimA-like protein kinase 1 and HSPK 21, is a protein kinase involved in mitotic regulation that may have a role at the G_2 -M transition and may also play a role in meiosis. NEK2 has a nuclear localization and accumulates throughout S phase and shows maximal levels in late G_2 . This expression pattern is highly reminiscent of that of A and B cyclins.

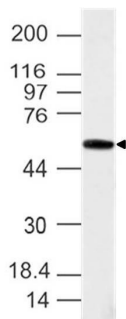
Overview

Product Name	Anti-Brachyury Antibody
Reactive Species	Human
Description	Boster Bio Anti-Brachyury Antibody (Catalog# A02161). Tested in WB application(s). This antibody reacts with Human.
Application	WB
Clonality	Polyclonal
Formulation	100 μg in 200 μl PBS containing 0.05% stabilizing protein and 0.05% sodium azide *This antibody is supplied in a stabilized formulation. Compatibility with conjugation reactions depends on the chemistry of the conjugation method used. For conjugation methods that are not compatible with the stabilizing components present in this formulation, a carrier-free antibody format is required.
Storage Instructions	Store the antibody at 4°C, stable for 6 months. For long-term storage, store at -20°C. Avoid repeated freeze and thaw cycles.
Host	Rabbit
Uniprot ID	O15178

Technical Details

Immunogen	A partial length recombinant Brachyury protein (amino acids 200-410)
Predicted Reactive Species	Bovine, Chicken, Xenopus Laevis, Xenopus Tropicalis, Zebrafish
Cross Reactivity	Predicted species reactivity based on epitope sequence homology: human, mouse, bovine, horse, rhesus macaque, dog, chimpanzee.
Isotype	Rabbit IgG
Form	Liquid
Concentration	0.5-1mg/ml, actual concentration vary by lot. Use suggested dilution ratio to decide dilution procedure.
Purification	Protein A Chromatography
Suggested Dilutions	Western blot: 2-4 µg/ml

Anti-Brachyury Antibody (A02161) Images



Western blot analysis of Brachyury. Anti-Brachyury antibody was used at 4 μ m

Submit a product review to Biocompare.com

Submit a review of this product to Biocompare.com to receive a \$20 Amazon.com giftcard! Your reviews help your fellow scientists make the right decisions. Thank you for your contribution.



Anti-Brachyury Antibody

For Research Use Only. Not for use in diagnostic procedures.