

Anti-Probetacellulin BTC Antibody

Catalog Number: A02171

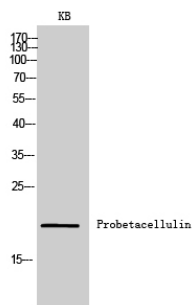
Overview

Product Name	Anti-Probetacellulin BTC Antibody
Reactive Species	Human
Description	Boster Bio Anti-Probetacellulin BTC Antibody catalog # A02171. Tested in WB applications. This antibody reacts with Human.
Application	WB
Clonality	Polyclonal 5B6
Formulation	Liquid in PBS containing 50% glycerol, 0.5% BSA and 0.02% sodium azide.
Storage Instructions	Store at -20°C for one year. For short term storage and frequent use, store at 4°C for up to one month. Avoid repeated freeze-thaw cycles.
Host	Rabbit
Uniprot ID	P35070

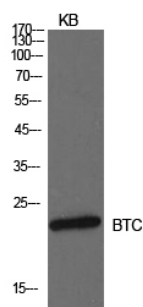
Technical Details

Immunogen	Synthesized peptide derived from the Internal region of human Probetacellulin.
Predicted Reactive Species	Bovine, Canine, Equine, Guinea Pig, Rabbit, Zebrafish
Isotype	IgG
Form	Liquid
Concentration	This antibody's concentration is >0.5mg/ml.
Purification	Immunogen affinity purified
Suggested Dilutions	<p>Dilute the sample so that the expected range of concentrations fall within the detection range of this kit.</p> <p>If the expected range of concentration is unknown, a pilot test should be conducted to decide the optimal dilution ratio for your samples.</p> <p>Some PubMed article(s) citing the expression level of this target are as follows:</p> <p>Boster Bio's internal QC testing used:</p> <p>WB, 1:500-1:2000</p>

Anti-Probetacellulin BTC Antibody (A02171) Images



Western Blot (WB) analysis of KB cells using Probetacellulin Polyclonal antibody.



Western Blot (WB) analysis of KB cells using Probetacellulin Polyclonal antibody.

Submit a product review to Biocompare.com

Submit a review of this product to Biocompare.com to receive a \$20 Amazon.com giftcard! Your reviews help your fellow scientists make the right decisions. Thank you for your contribution.



Anti-Probetacellulin BTC Antibody