

## Anti-Golgin subfamily A member 5 GOLGA5 Antibody

Catalog Number: A02176

### About GOLGA5

GOLGA5 (Golgi autoantigen, subfamily A, member 5), also known as GOLGA84, RFG5 (RET-fused gene 5 protein) or GOLIM5, is a ubiquitously expressed single-pass type II coiled-coil membrane protein that is involved in maintaining Golgi structure (1). It is localized to the Golgi apparatus and predominantly found on membranes at the cis side of the Golgi stack (1,2). As a mitotic phosphoprotein, GOLGA5 binds to active Rab 1 and associates with CASP (an isoform of CDP) in a golgin-tethering complex that is believed to play a role in intra-Golgi retrograde transport (3,4). Defects in GOLGA5 are a cause of thyroid papillary carcinoma (TPC) (5).

### Overview

Product Name	Anti-Golgin subfamily A member 5 GOLGA5 Antibody
Reactive Species	Human, Mouse, Rat
Description	Boster Bio Anti-Golgin subfamily A member 5 GOLGA5 Antibody (Catalog # A02176). Tested in ELISA, WB, IHC-P, IF applications. This antibody reacts with Human, Mouse, Rat.
Application	ELISA, IF, IHC-P, WB
Clonality	Polyclonal
Formulation	GOLGA5 Antibody is supplied in PBS containing 0.02% sodium azide.
Storage Instructions	Antibody can be stored at 4°C up to one year. Antibodies should not be exposed to prolonged high temperatures.
Host	Rabbit
Uniprot ID	Q8TBA6

### Technical Details

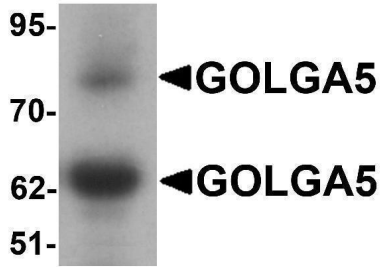
Immunogen	GOLGA5 antibody was raised against an 18 amino acid peptide near the carboxy terminus of human GOLGA5. The immunogen is located within amino acids 540 - 590 of GOLGA5.
Predicted Reactive Species	Bovine, Mouse, Rat
Cross Reactivity	GOLGA5 antibody is human, mouse and rat reactive. Two isoforms of GOLGA5 exist due to alternative splicing events.
Isotype	IgG
Form	Liquid
Concentration	1 mg/mL
Purification	GOLGA5 Antibody is affinity chromatography purified via peptide column.

Suggested Dilutions

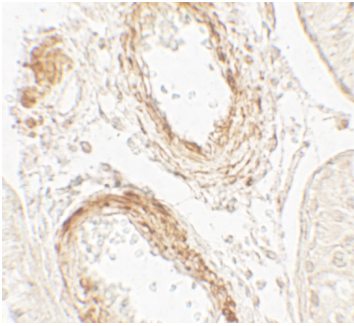
GOLGA5 antibody can be used for detection of GOLGA5 by Western blot at 1 - 2 ug/mL. Antibody can also be used for Immunohistochemistry starting at 5 ug/mL. For immunofluorescence start at 20 ug/mL.

Antibody validated: Western Blot in human samples; Immunohistochemistry in human samples and Immunofluorescence in human samples. All other applications and species not yet tested. Optimal dilutions for each application should be determined by the researcher.

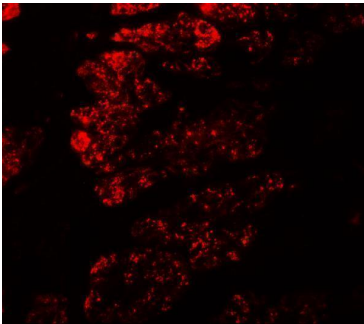
## Anti-Golgin subfamily A member 5 GOLGA5 Antibody (A02176) Images



Western blot analysis of GOLGA5 in human testis tissue lysate with GOLGA5 antibody at 1 ug/mL.



Immunohistochemistry of GOLGA5 in human testis tissue with GOLGA5 antibody at 5 ug/mL.



Immunofluorescence of GOLGA5 in human testis tissue with GOLGA5 antibody at 20 ug/mL.

### Submit a product review to Biocompare.com

Submit a review of this product to Biocompare.com to receive a \$20 Amazon.com giftcard! Your reviews help your fellow scientists make the right decisions. Thank you for your contribution.



Anti-Golgin subfamily A member 5 GOLGA5 Antibody

For Research Use Only. Not for use in diagnostic procedures.