

Anti-Uteroglobin/Scgb1a1 Antibody Picoband™

Catalog Number: A02201-2

About Scgb1a1

Uteroglobin, also known as secretoglobin family 1A member 1 (SCGB1A1), is a protein that in humans is encoded by the SCGB1A1 gene. This gene encodes a member of the secretoglobin family of small secreted proteins. The encoded protein has been implicated in numerous functions including anti-inflammation, inhibition of phospholipase A2 and the sequestering of hydrophobic ligands. Defects in this gene are associated with a susceptibility to asthma.

Overview

Product Name	Anti-Uteroglobin/Scgb1a1 Antibody Picoband™
Reactive Species	Rat
Description	Boster Bio Anti-Uteroglobin/Scgb1a1 Antibody Picoband™ catalog # A02201-2. Tested in ELISA, IHC, WB applications. This antibody reacts with Rat.
Application	ELISA, IHC, WB
Clonality	Polyclonal
Formulation	Each vial contains 4mg Trehalose, 0.9mg NaCl, 0.2mg Na ₂ HPO ₄ , 0.05mg NaN ₃ .
Storage Instructions	Store at -20°C for one year from date of receipt. After reconstitution, at 4°C for one month. It can also be aliquotted and stored frozen at -20°C for six months. Avoid repeated freeze-thaw cycles.
Host	Rabbit
Uniprot ID	P17559

Technical Details

Immunogen	E. coli-derived rat Uteroglobin recombinant protein (Position: S20-V96).
Predicted Reactive Species	Human
Recommended Detection Systems	Boster recommends Enhanced Chemiluminescent Kit with anti-Rabbit IgG (EK1002) for Western blot, and HRP Conjugated anti-Rabbit IgG Super Vision Assay Kit (SV0002-1) for IHC(P).
Cross Reactivity	No cross-reactivity with other proteins.
Isotype	Rabbit IgG
Form	Lyophilized
Concentration	Adding 0.2 ml of distilled water will yield a concentration of 500 ug/ml.
Purification	Immunogen affinity purified.

Suggested Dilutions

Dilute the sample so that the expected range of concentrations fall within the detection range of this kit.

If the expected range of concentration is unknown, a pilot test should be conducted to decide the optimal dilution ratio for your samples.

Some PubMed article(s) citing the expression level of this target are as follows:

Boster Bio's internal QC testing used:

Western blot, 0.1-0.5ug/ml

Immunohistochemistry (Paraffin-embedded Section), 0.5-1ug/ml

ELISA(Cap), 1-5ug/ml

Anti-Uteroglobin/Scgb1a1 Antibody Picoband™ (A02201-2) Images

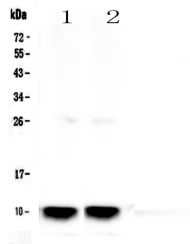


Figure 1. Western blot analysis of Uteroglobin using anti-Uteroglobin antibody (A02201-2).

Electrophoresis was performed on a 5-20% SDS-PAGE gel at 70V (Stacking gel) / 90V (Resolving gel) for 2-3 hours. The sample well of each lane was loaded with 50ug of sample under reducing conditions.

Lane 1: rat lung tissue lysate,
Lane 2: rat lung tissue lysate.

After Electrophoresis, proteins were transferred to a Nitrocellulose membrane at 150mA for 50-90 minutes. Blocked the membrane with 5% Non-fat Milk/ TBS for 1.5 hour at RT. The membrane was incubated with rabbit anti-Uteroglobin antigen affinity purified polyclonal antibody (Catalog # A02201-2) at 0.5 ug/mL overnight at 4°C, then washed with TBS-0.1%Tween 3 times with 5 minutes each and probed with a goat anti-rabbit IgG-HRP secondary antibody at a dilution of 1:10000 for 1.5 hour at RT. The signal is developed using an Enhanced Chemiluminescent detection (ECL) kit (Catalog # EK1002) with Tanon 5200 system. A specific band was detected for Uteroglobin at approximately 10KD. The expected band size for Uteroglobin is at 10KD.

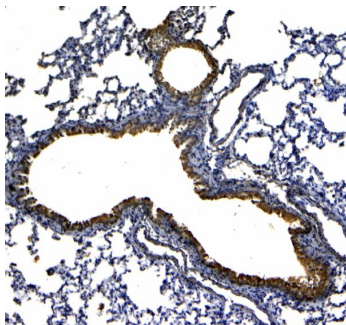


Figure 2. IHC analysis of Uteroglobin using anti-Uteroglobin antibody (A02201-2). Uteroglobin was detected in paraffin-embedded section of rat lung tissue. Heat mediated antigen retrieval was performed in citrate buffer (pH6, epitope retrieval solution) for 20 mins. The tissue section was blocked with 10% goat serum. The tissue section was then incubated with 1ug/ml rabbit anti-Uteroglobin Antibody (A02201-2) overnight at 4°C. Biotinylated goat anti-rabbit IgG was used as secondary antibody and incubated for 30 minutes at 37°C. The tissue section was developed using Streptavidin-Biotin-Complex (SABC)(Catalog # SA1022) with DAB as the chromogen.

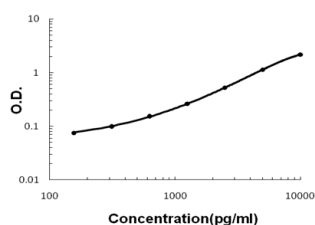


Figure 3. Sandwich ELISA - Recombinant rat SCGB1A1 protein standard curve.

Use in combination with reagents from Rat SCGB1A1 ELISA Kit EZ-Set (DIY Antibody Pairs) (EZ1636).

Submit a product review to Biocompare.com

Submit a review of this product to Biocompare.com to receive a \$20 Amazon.com giftcard! Your reviews help your fellow scientists make the right decisions. Thank you for your contribution.



Anti-Uteroglobin/Scgb1a1 Antibody [™]