

## Anti-MATH1/HATH1/ATOH1 Antibody Picoband®

Catalog Number: A02207-1

### About ATOH1

Protein atonal homolog 1 is a protein that in humans is encoded by the ATOH1 gene. This protein belongs to the basic helix-loop-helix (BHLH) family of transcription factors. It activates E-box dependent transcription along with E47. ATOH1 is required for the formation of both neural and non-neural cell types. Using genetic deletion in mice, Atoh1 has been shown to be essential for formation of cerebellar granule neurons, inner ear hair cells, spinal cord interneurons, Merkel cells of the skin, and intestinal secretory cells (goblet, enteroendocrine, and Paneth cells).

### Overview

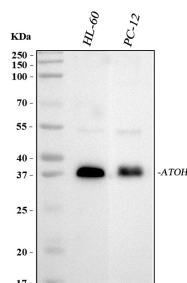
Product Name	Anti-MATH1/HATH1/ATOH1 Antibody Picoband®
Reactive Species	Human, Rat
Description	Boster Bio Anti-MATH1/HATH1/ATOH1 Antibody Picoband® catalog # A02207-1. Tested in WB applications. This antibody reacts with Human, Rat. The brand Picoband indicates this is a premium antibody that guarantees superior quality, high affinity, and strong signals with minimal background in Western blot applications. Only our best-performing antibodies are designated as Picoband, ensuring unmatched performance.
Application	WB
Clonality	Polyclonal
Formulation	Each vial contains 4 mg Trehalose, 0.9 mg NaCl and 0.2 mg Na <sub>2</sub> HPO <sub>4</sub> .
Storage Instructions	Store at -20°C for one year from date of receipt. After reconstitution, at 4°C for one month. It can also be aliquotted and stored frozen at -20°C for six months. Avoid repeated freeze-thaw cycles.
Host	Rabbit
Uniprot ID	Q92858

### Technical Details

Immunogen	A synthetic peptide corresponding to a sequence at the N-terminus of human MATH1/HATH1, different from the related mouse sequence by three amino acids.
Recommended Detection Systems	Boster recommends Enhanced Chemiluminescent Kit with anti-Rabbit IgG (EK1002) for Western blot.
Cross Reactivity	No cross-reactivity with other proteins.
Isotype	Rabbit IgG
Form	Lyophilized
Concentration	Adding 0.2 ml of distilled water will yield a concentration of 500 ug/ml.

Purification	Immunogen affinity purified.
Suggested Dilutions	Western blot, 0.1-0.5ug/ml, Human, Rat

## Anti-MATH1/HATH1/ATOH1 Antibody Picoband® (A02207-1) Images



Western blot analysis of MATH1/HATH1/ATOH1 using anti-MATH1/HATH1/ATOH1 antibody (A02207-1). Electrophoresis was performed on a 5-20% SDS-PAGE gel at 70V (Stacking gel) / 90V (Resolving gel) for 2-3 hours. The sample well of each lane was loaded with 30 ug of sample under reducing conditions. Lane 1: human HL-60 whole cell lysates, Lane 2: rat PC-12 whole cell lysates. After electrophoresis, proteins were transferred to a nitrocellulose membrane at 150 mA for 50-90 minutes. Blocked the membrane with 5% non-fat milk/TBS for 1.5 hour at RT. The membrane was incubated with rabbit anti-MATH1/HATH1/ATOH1 antigen affinity purified polyclonal antibody (Catalog # A02207-1) at 0.5 ug/mL overnight at 4°C, then washed with TBS-0.1%Tween 3 times with 5 minutes each and probed with a goat anti-rabbit IgG-HRP secondary antibody at a dilution of 1:5000 for 1.5 hour at RT. The signal is developed using an Enhanced Chemiluminescent detection (ECL) kit (Catalog # EK1002) with Tanon 5200 system. A specific band was detected for MATH1/HATH1/ATOH1 at approximately 38 kDa. The expected band size for MATH1/HATH1/ATOH1 is at 38 kDa.

### Submit a product review to Biocompare.com

Submit a review of this product to Biocompare.com to receive a \$20 Amazon.com giftcard! Your reviews help your fellow scientists make the right decisions. Thank you for your contribution.



### Anti-MATH1/HATH1/ATOH1 Antibody

For Research Use Only. Not for use in diagnostic procedures.