

Anti-GPVI GP6 Antibody

Catalog Number: A02208

About GP6

Glycoprotein VI (GP6) is a 58kD platelet membrane glycoprotein that plays a crucial role in the collagen-induced activation and aggregation of platelets. It is uniquely expressed by cells of the megakaryocytic/platelet lineage, and is a member of the immunoglobulin gene superfamily, closely related to Fc receptor gamma chain (FcRgamma) and natural killer receptors. Glycoprotein VI plays a key role in platelet procoagulant activity and subsequent thrombin and fibrin formation. This procoagulant function may contribute to arterial and venous thrombus formation. The signaling pathway involves the FcRgamma, the Src kinases (likely Fyn/Lyn), the adapter protein LAT and leads to the activation of phospholipase C gamma2. GPVI deficiency can result in bleeding disorders. Further study should reveal the extent of GPVI involvement in thrombotic disease and allow the development of alternative anti-thrombotic compounds.

Overview

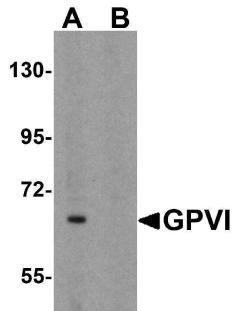
Product Name	Anti-GPVI GP6 Antibody
Reactive Species	Human, Mouse, Rat
Description	Boster Bio Anti-GPVI GP6 Antibody (Catalog # A02208). Tested in ELISA, WB, IHC-P, IF applications. This antibody reacts with Human, Mouse, Rat.
Application	ELISA, IF, IHC-P, WB
Clonality	Polyclonal
Formulation	GPVI Antibody is supplied in PBS containing 0.02% sodium azide.
Storage Instructions	Antibody can be stored at 4°C up to one year. Antibodies should not be exposed to prolonged high temperatures.
Host	Rabbit
Uniprot ID	Q9HCN6

Technical Details

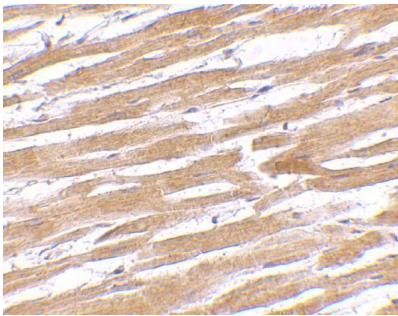
Immunogen	GPVI antibody was raised against a 15 amino acid synthetic peptide near the carboxy terminus of isoform 2 of the human GPVI. The immunogen is located within the last 50 amino acids of GPVI.
Predicted Reactive Species	Bovine, Mouse, Rat
Cross Reactivity	At least three GPVI isoforms are known to exist; this antibody will detect the two longest isoforms. Because of its extensive glycosylation, GPVI often migrates at a higher than expected molecular weight in SDS-PAGE.
Isotype	IgG
Form	Liquid

Concentration	1 mg/mL
Purification	GPVI Antibody is affinity chromatography purified via peptide column.
Suggested Dilutions	GPVI antibody can be used for detection of GPVI by Western blot at 1 ug/mL. Antibody can also be used for immunohistochemistry starting at 10 ug/mL. For immunofluorescence start at 20 ug/mL. Antibody validated: Western Blot in mouse samples; Immunohistochemistry in human samples and Immunofluorescence in human samples. All other applications and species not yet tested. Optimal dilutions for each application should be determined by the researcher.

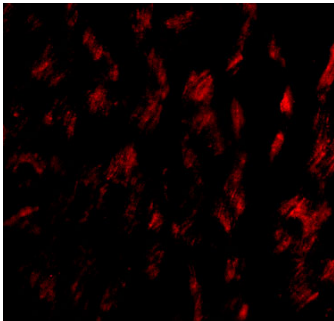
Anti-GPVI GP6 Antibody (A02208) Images



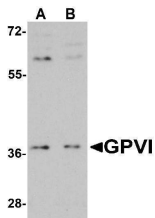
Western blot analysis of GPVI in K562 cell lysate with GPVI antibody at 1 ug/mL in (A) the absence and (B) the presence of blocking peptide.



Immunohistochemistry of GPVI in human heart tissue with GPVI antibody at 10 ug/mL.



Immunofluorescence of GPVI in Human Heart tissue with GPVI antibody at 20 ug/mL.



Western blot analysis of GPVI in HeLa (A) and Jurkat (B) with GPVI antibody at 1 ug/mL.

Submit a product review to [Biocompare.com](https://www.biocompare.com)

Submit a review of this product to [Biocompare.com](https://www.biocompare.com) to receive a \$20 Amazon.com giftcard! Your reviews help your fellow scientists make the right decisions. Thank you for your contribution.



Anti-GPVI GP6 Antibody

For Research Use Only. Not for use in diagnostic procedures.