

## Anti-GUSB Antibody (Center)

Catalog Number: A02234

### About GUSB

The GUSB gene encodes beta-glucuronidase (EC 3.2.1.31), a lysosomal hydrolase involved in the stepwise degradation of glucuronic acid-containing glycosaminoglycans (Shiple et al., 1993 [PubMed 7680524]). It is a tetrameric glycoprotein composed of identical subunits (Oshima et al., 1987 [PubMed 3468507]). The GUSB gene is mutated in mucopolysaccharidosis type VII (MPS7; MIM 253220).

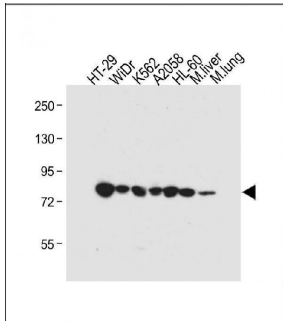
### Overview

Product Name	Anti-GUSB Antibody (Center)
Reactive Species	Human, Mouse
Description	Boster Bio Anti-GUSB Antibody (Center) (Catalog # A02234). Tested in IHC-P, Flow Cytometry, WB application(s). This antibody reacts with Human, Mouse.
Application	Flow Cytometry, IHC-P, WB
Clonality	Polyclonal
Formulation	Purified polyclonal antibody supplied in PBS with 0.09% (W/V) sodium azide.
Storage Instructions	Maintain refrigerated at 2-8°C for up to 2 weeks. For long-term storage, store at -20°C in small aliquots to prevent freeze-thaw cycles.
Host	Rabbit
Uniprot ID	P08236

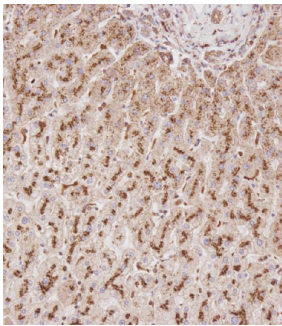
### Technical Details

Immunogen	This GUSB antibody is generated from rabbits immunized with a KLH conjugated synthetic peptide between 335-362 amino acids from the Central region of human GUSB.
Predicted Reactive Species	Pig
Isotype	Rabbit IgG
Purification	This antibody is purified through a protein A column, followed by peptide affinity purification.
Suggested Dilutions	WB: 1:4000 IHC-P: 1:100 FC: 1:10-1:50

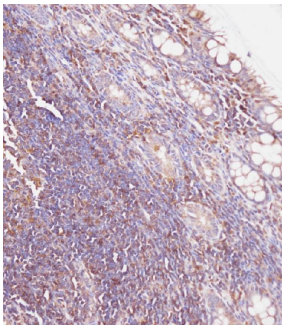
## Anti-GUSB Antibody (Center) (A02234) Images



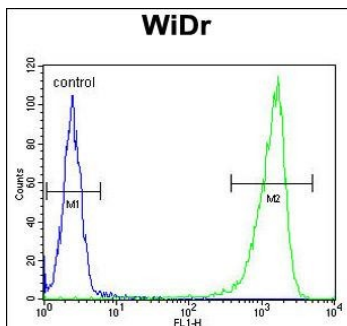
All lanes : Anti-GUSB Antibody (Center) at 1:4000 dilution  
Lane 1: HT-29 whole cell lysate  
Lane 2: WiDr whole cell lysate  
Lane 3: K562 whole cell lysate  
Lane 4: A2058 whole cell lysate  
Lane 5: HL-60 whole cell lysate  
Lane 6: Mouse liver tissue lysate  
Lane 7: Mouse lung tissue lysate  
Lysates/proteins at 20 µg per lane. Secondary Goat Anti-Rabbit IgG, (H+L), Peroxidase conjugated at 1/10000 dilution. Predicted band size : 75 kDa  
Blocking/Dilution buffer: 5% NFD/MTBST.



Immunohistochemical analysis of A02234 on paraffin-embedded Human liver tissue. Tissue was fixed with formaldehyde at room temperature. Heat induced epitope retrieval was performed by EDTA buffer (pH9.0). Samples were incubated with primary antibody (1:100) for 1 hour at room temperature. Undiluted CRF Anti-Polyvalent HRP Polymer antibody was used as the secondary antibody.



Immunohistochemical analysis of A02234 on paraffin-embedded Human colon carcinoma tissue. Tissue was fixed with formaldehyde at room temperature. Heat induced epitope retrieval was performed by EDTA buffer (pH9.0). Samples were incubated with primary antibody (1:100) for 1 hour at room temperature. Undiluted CRF Anti-Polyvalent HRP Polymer antibody was used as the secondary antibody.



GUSB Antibody (Center) (Cat. #A02234) flow cytometric analysis of WiDr cells (right histogram) compared to a negative control cell (left histogram). FITC-conjugated goat-anti-rabbit secondary antibodies were used for the analysis.

Submit a product review to [Biocompare.com](https://www.biocompare.com)

Submit a review of this product to [Biocompare.com](https://www.biocompare.com) to receive a \$20 Amazon.com giftcard! Your reviews help your fellow scientists make the right decisions. Thank you for your contribution.



Anti-GUSB Antibody (Center)

For Research Use Only. Not for use in diagnostic procedures.