

Anti-IL28B IFNL3 Antibody

Catalog Number: A02261-1

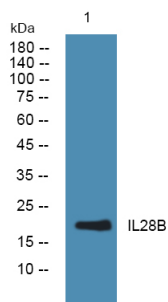
Overview

Product Name	Anti-IL28B IFNL3 Antibody
Reactive Species	Human, Mouse
Description	Boster Bio Anti-IL28B IFNL3 Antibody catalog # A02261-1. Tested in WB, ELISA applications. This antibody reacts with Human, Mouse.
Application	ELISA, WB
Clonality	Polyclonal
Formulation	Liquid form in PBS containing 50% glycerol, and 0.02% sodium azide.
Storage Instructions	Store at -20°C for one year. For short term storage and frequent use, store at 4°C for up to one month. Avoid repeated freeze-thaw cycles.
Host	Rabbit
Uniprot ID	Q8IZI9

Technical Details

Immunogen	Synthesized peptide derived from human protein at AA range: 100-180
Isotype	IgG
Form	Liquid
Concentration	1 mg/ml
Purification	IL28B antibody was affinity-purified from rabbit antiserum by affinity-chromatography using epitope-specific immunogen.
Suggested Dilutions	WB 1:500-2000 ELISA 1:5000-20000

Anti-IL28B IFNL3 Antibody (A02261-1) Images



Western blot analysis of lysates from Jurkat cells, primary antibody was diluted at 1:1000, 4°over night

Submit a product review to Biocompare.com

Submit a review of this product to Biocompare.com to receive a \$20 Amazon.com giftcard! Your reviews help your fellow scientists make the right decisions. Thank you for your contribution.



Anti-IL28B IFNL3 Antibody

For Research Use Only. Not for use in diagnostic procedures.