

## Anti-Suppressor of fused homolog SUFU Antibody

Catalog Number: A02279-2

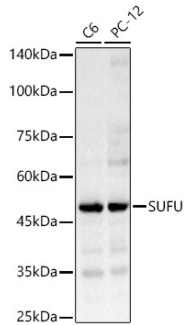
### Overview

Product Name	Anti-Suppressor of fused homolog SUFU Antibody
Reactive Species	Human, Mouse, Rat
Description	Boster Bio Anti-Suppressor of fused homolog SUFU Antibody catalog # A02279-2. Tested in WB,IHC-P,ICC/IF applications. This antibody reacts with Human,Mouse,Rat.
Application	IF, IHC-P, ICC, WB
Clonality	Polyclonal
Formulation	Rabbit IgG, 1mg/ml in PBS with 0.02% sodium azide, 50% glycerol, pH7.2
Storage Instructions	Store at -20°C for one year. For short term storage and frequent use, store at 4°C for up to one month. Avoid repeated freeze-thaw cycles.
Host	Rabbit
Uniprot ID	Q9UMX1

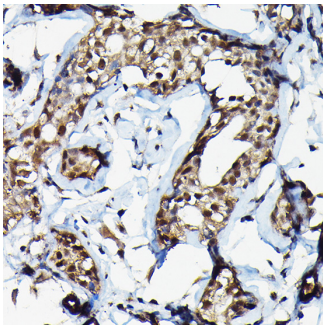
### Technical Details

Immunogen	Recombinant fusion protein containing a sequence corresponding to amino acids 325-484 of human SUFU (NP_057253.2).
Isotype	IgG
Form	Liquid
Concentration	1 mg/ml
Purification	The antibody was affinity-purified from rabbit antiserum by affinity-chromatography using epitope-specific immunogen and the purity is > 95% (by SDS-PAGE).
Suggested Dilutions	WB: 1:500-1:2000 IHC-P/ICC/IF: 1:50-1:200

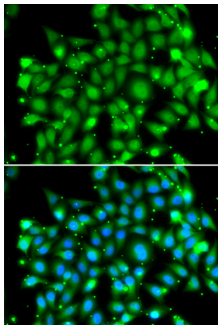
## Anti-Suppressor of fused homolog SUFU Antibody (A02279-2) Images



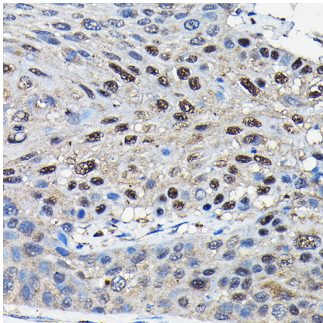
Western blot analysis of various lysates, using SUFU pAb at 1:1000 dilution.



Immunohistochemistry analysis of paraffin-embedded human breast cancer using SUFU pAb at dilution of 1:100 (40x lens).



Immunofluorescence analysis of MCF-7 cells using SUFU antibody.



Immunohistochemistry analysis of paraffin-embedded human esophageal cancer using SUFU pAb at dilution of 1:100 (40x lens).

**Submit a product review to Biocompare.com**

Submit a review of this product to Biocompare.com to receive a \$20 Amazon.com giftcard! Your reviews help your fellow scientists make the right decisions. Thank you for your contribution.



Anti-Suppressor of fused homolog SUFU Antibody

For Research Use Only. Not for use in diagnostic procedures.