

## Anti-Keratin 17 KRT17 Antibody

Catalog Number: A02289

### About KRT17

May play a role in the formation and maintenance of various skin appendages, specifically in determining shape and orientation of hair. May be a marker of basal cell differentiation in complex epithelia and therefore indicative of a certain type of epithelial "stem cells". May act as an autoantigen in the immunopathogenesis of psoriasis, with certain peptide regions being a major target for autoreactive T-cells and hence causing their proliferation. Required for the correct growth of hair follicles, in particular for the persistence of the anagen (growth) state. Modulates the function of TNF-alpha in the specific context of hair cycling. Regulates protein synthesis and epithelial cell growth through binding to the adapter protein SFN and by stimulating Akt/mTOR pathway. Involved in tissue repair By similarity.

M Rosenberg, Mol. Cell. Biol., Feb 1988; 8: 722 - 736.

SM Troyanovsky, J. Cell Sci., Jul 1989; 93: 419.

Kevin M. McGowan, Genes & Dev., Jun 2002; 16: 1412.

Nicholas Bianchi, Mol. Cell. Biol., Aug 2005; 25: 7249 - 7259.

### Overview

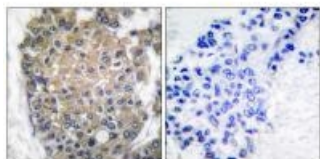
Product Name	Anti-Keratin 17 KRT17 Antibody
Reactive Species	Human, Mouse, Rat
Description	Boster Bio Anti-Keratin 17 KRT17 Antibody (Catalog # A02289). Tested in WB, IHC, IF applications. This antibody reacts with Human, Mouse, Rat.
Application	IF, IHC, WB
Clonality	Polyclonal
Formulation	Rabbit IgG in phosphate buffered saline (without Mg <sup>2+</sup> and Ca <sup>2+</sup> ), pH 7.4, 150mM NaCl, 0.02% sodium azide and 50% glycerol.
Storage Instructions	Store at -20°C for one year. For short term storage and frequent use, store at 4°C for up to one month. Avoid repeated freeze-thaw cycles.
Host	Rabbit
Uniprot ID	Q04695

### Technical Details

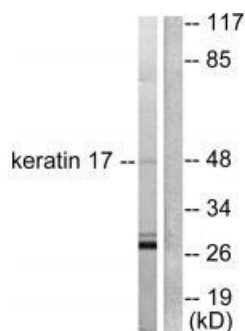
Immunogen	Synthesized peptide derived from human keratin 17.
Predicted Reactive Species	Boar, Bovine, Canine, Golden Hamster
Isotype	IgG

Form	Liquid
Concentration	1 mg/ml
Purification	The antibody was affinity-purified from rabbit antiserum by affinity-chromatography using epitope-specific immunogen.
Suggested Dilutions	<p>Dilute the sample so that the expected range of concentrations fall within the detection range of this kit.</p> <p>If the expected range of concentration is unknown, a pilot test should be conducted to decide the optimal dilution ratio for your samples.</p> <p>Some PubMed article(s) citing the expression level of this target are as follows:</p> <p>Boster Bio's internal QC testing used:</p> <p>Western blotting: 1:500~1:3000</p> <p>Immunohistochemistry: 1:50~1:100</p> <p>Immunofluorescence: 1:100~1:500</p>

## Anti-Keratin 17 KRT17 Antibody (A02289) Images



Immunohistochemical analysis of paraffin-embedded human breast carcinoma tissue using keratin 17 antibody A02289.



Western blot analysis of extracts from HuvEc cells, using keratin 17 antibody A02289.



Immunofluorescence analysis of HepG2 cells, using keratin 17 antibody A02289.

## Submit a product review to Biocompare.com

Submit a review of this product to Biocompare.com to receive a \$20 Amazon.com giftcard! Your reviews help your fellow scientists make the right decisions. Thank you for your contribution.



Anti-Keratin 17 KRT17 Antibody