

## Anti-MT-ND1 Antibody

Catalog Number: A02292

### About MT-ND1

Core subunit of the mitochondrial membrane respiratory chain NADH dehydrogenase (Complex I) that is believed to belong to the minimal assembly required for catalysis. Complex I functions in the transfer of electrons from NADH to the respiratory chain. The immediate electron acceptor for the enzyme is believed to be ubiquinone By similarity. HAMAP-Rule MF\_01350

Anderson S., Nature 290:457-465(1981).

Horai S., Proc. Natl. Acad. Sci. U.S.A. 92:532-536(1995).

Moilanen J.S., Mol. Biol. Evol. 20:2132-2142(2003).

### Overview

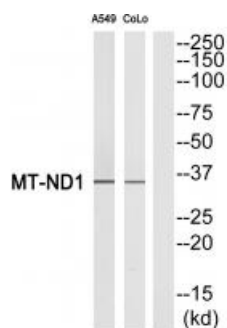
Product Name	Anti-MT-ND1 Antibody
Reactive Species	Human
Description	Boster Bio Anti-MT-ND1 Antibody (Catalog # A02292). Tested in WB, IHC applications. This antibody reacts with Human.
Application	IHC, WB
Clonality	Polyclonal
Formulation	Rabbit IgG in phosphate buffered saline (without Mg <sup>2+</sup> and Ca <sup>2+</sup> ), pH 7.4, 150mM NaCl, 0.02% sodium azide and 50% glycerol.
Storage Instructions	Store at -20°C for one year. For short term storage and frequent use, store at 4°C for up to one month. Avoid repeated freeze-thaw cycles.
Host	Rabbit
Uniprot ID	P03886

### Technical Details

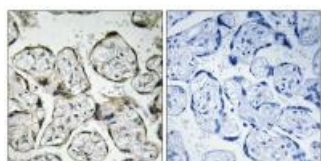
Immunogen	Synthesized peptide derived from internal of human MT-ND1.
Predicted Reactive Species	Boar, Bovine, Canine, Golden Hamster
Isotype	IgG
Form	Liquid
Concentration	1 mg/ml
Purification	The antibody was affinity-purified from rabbit antiserum by affinity-chromatography using epitope-

	specific immunogen.
Suggested Dilutions	<p>Dilute the sample so that the expected range of concentrations fall within the detection range of this kit.</p> <p>If the expected range of concentration is unknown, a pilot test should be conducted to decide the optimal dilution ratio for your samples.</p> <p>Some PubMed article(s) citing the expression level of this target are as follows:</p> <p>Boster Bio's internal QC testing used:</p> <p>Western blotting: 1:500~1:3000</p> <p>Immunohistochemistry: 1:50~1:100</p>

## Anti-MT-ND1 Antibody (A02292) Images



Western blot analysis of extracts from A549 cells and COLO cells, using MT-ND1 antibody A02292.



Immunohistochemistry analysis of paraffin-embedded human placenta tissue, using MT-ND1 antibody A02292.

## Submit a product review to Biocompare.com

Submit a review of this product to Biocompare.com to receive a \$20 Amazon.com giftcard! Your reviews help your fellow scientists make the right decisions. Thank you for your contribution.



Anti-MT-ND1 Antibody