

Anti-Fibulin 3 EFEMP1 Antibody

Catalog Number: A02302-1

About EFEMP1

Fibulin 3, also known as epidermal growth factor (EGF)-containing fibulin-like extracellular matrix protein 1 (EFEMP1), is a member of the fibulin family of extracellular glycoproteins, a group of proteins that are widely distributed and frequently associated with vascular and elastic tissues. The fibulin proteins typically contain a tandem array of EGF-like repeats and a fibulin-type COOH-terminal module. Aberrant accumulation of Fibulin 3 in the endoplasmic reticulum of retinal pigment epithelial cells has been shown to be associated with inherited forms of macular degeneration, but the loss of Fibulin 3 expression does not lead to macular degeneration but rather the appearance of hernias due to a reduction of elastic fibers of fascial connective tissue. Recent experiments have shown that expression of Fibulin 3 promotes tumor growth and may thus be a therapeutic target.

Overview

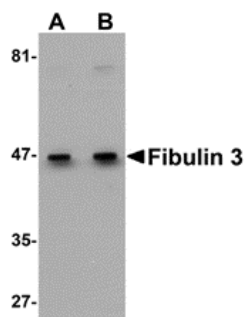
Product Name	Anti-Fibulin 3 EFEMP1 Antibody
Reactive Species	Human, Mouse, Rat
Description	Boster Bio Anti-Fibulin 3 EFEMP1 Antibody (Catalog # A02302-1). Tested in ELISA, WB, ICC, IF applications. This antibody reacts with Human, Mouse, Rat.
Application	ELISA, IF, ICC, WB
Clonality	Polyclonal
Formulation	Fibulin 3 Antibody is supplied in PBS containing 0.02% sodium azide.
Storage Instructions	Fibulin 3 antibody can be stored at 4°C for three months and -20°C, stable for up to one year. Avoid repeated freeze-thaw cycles. Antibodies should not be exposed to prolonged high temperatures.
Host	Rabbit
Uniprot ID	Q12805

Technical Details

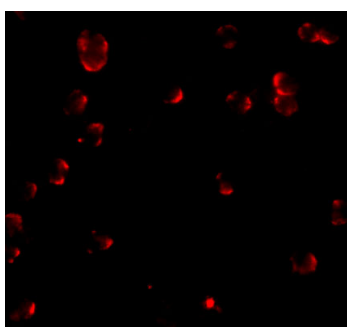
Immunogen	Fibulin 3 antibody was raised against a 19 amino acid synthetic peptide near the carboxy terminus of human Fibulin 3. The immunogen is located within amino acids 410 - 460 of Fibulin 3.
Predicted Reactive Species	Chicken
Cross Reactivity	At least three isoforms of Fibulin 3 are known to exist. This antibody is predicted to not cross-react with other Fibulin proteins.
Isotype	IgG
Form	Liquid

Concentration	1 mg/mL
Purification	Fibulin 3 Antibody is affinity chromatography purified via peptide column.
Suggested Dilutions	<p>Fibulin 3 antibody can be used for detection of Fibulin 3 by Western blot at 0.5 - 1 ug/mL. Antibody can also be used for immunocytochemistry starting at 20 ug/mL. For immunofluorescence start at 20 ug/mL.</p> <p>Antibody validated: Western Blot in human samples; Immunocytochemistry in human samples and Immunofluorescence in human samples. All other applications and species not yet tested. Optimal dilutions for each application should be determined by the researcher.</p>

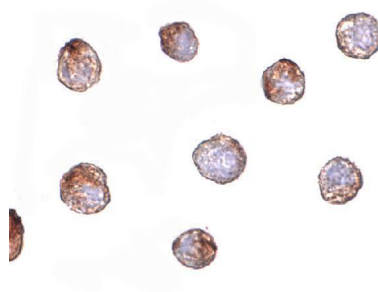
Anti-Fibulin 3 EFEMP1 Antibody (A02302-1) Images



Western blot analysis of Fibulin 3 in HeLa cell lysate with Fibulin 3 antibody at (A) 0.5 and (B) 1 ug/mL.



Immunofluorescence of Fibulin 3 in HeLa cells with Fibulin 3 antibody at 20 ug/mL.



Immunocytochemistry of Fibulin 3 in HeLa cells with Fibulin 3 antibody at 20 ug/mL.

Submit a product review to [Biocompare.com](https://www.biocompare.com)

Submit a review of this product to [Biocompare.com](https://www.biocompare.com) to receive a \$20 Amazon.com giftcard! Your reviews help your fellow scientists make the right decisions. Thank you for your contribution.



Anti-Fibulin 3 EFEMP1 Antibody

For Research Use Only. Not for use in diagnostic procedures.