

Anti-Keratin 10 KRT10 Antibody

Catalog Number: A02305

About KRT10

This gene encodes a member of the type I (acidic) cytokeratin family, which belongs to the superfamily of intermediate filament (IF) proteins. Keratins are heteropolymeric structural proteins which form the intermediate filament. These filaments, along with actin microfilaments and microtubules, compose the cytoskeleton of epithelial cells. Mutations in this gene are associated with epidermolytic hyperkeratosis. This gene is located within a cluster of keratin family members on chromosome 17q21.

XM Zhou, J. Biol. Chem., Oct 1988; 263: 15584 - 15589.

Felix B. Müller, Hum. Mol. Genet., Apr 2006; 15: 1133 - 1141.

J Reichelt, J. Cell Sci., Sep 1997; 110: 2175.

BP Korge, PNAS, Feb 1992; 89: 910.

Overview

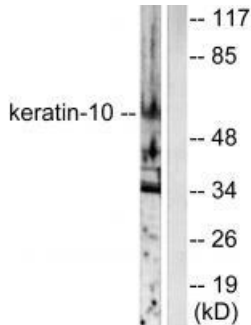
Product Name	Anti-Keratin 10 KRT10 Antibody
Reactive Species	Human, Rat
Description	Boster Bio Anti-Keratin 10 KRT10 Antibody (Catalog # A02305). Tested in WB, IF applications. This antibody reacts with Human, Rat.
Application	IF, WB
Clonality	Polyclonal
Formulation	Rabbit IgG in phosphate buffered saline (without Mg ²⁺ and Ca ²⁺), pH 7.4, 150mM NaCl, 0.02% sodium azide and 50% glycerol.
Storage Instructions	Store at -20°C for one year. For short term storage and frequent use, store at 4°C for up to one month. Avoid repeated freeze-thaw cycles.
Host	Rabbit
Uniprot ID	P13645

Technical Details

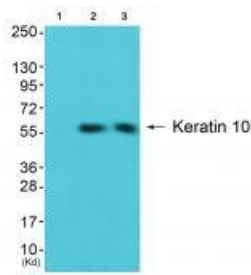
Immunogen	Synthesized peptide derived from human Keratin 10.
Predicted Reactive Species	Boar, Bovine, Canine, Golden Hamster
Isotype	IgG
Form	Liquid
Concentration	1 mg/ml

Purification	The antibody was affinity-purified from rabbit antiserum by affinity-chromatography using epitope-specific immunogen.
Suggested Dilutions	<p>Dilute the sample so that the expected range of concentrations fall within the detection range of this kit.</p> <p>If the expected range of concentration is unknown, a pilot test should be conducted to decide the optimal dilution ratio for your samples.</p> <p>Some PubMed article(s) citing the expression level of this target are as follows:</p> <p>Boster Bio's internal QC testing used:</p> <p>Western blotting: 1:500~1:3000</p> <p>Immunofluorescence: 1:100~1:500</p>

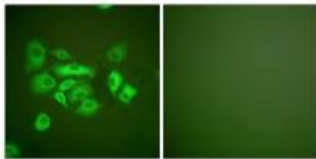
Anti-Keratin 10 KRT10 Antibody (A02305) Images



Western blot analysis of extracts from HeLa cells, using Keratin 10 antibody A02305.



Western blot analysis of extracts from COS7 cells and 3T3 cells using Keratin 10 antibody A02305. The lane on the left is treated with synthesized peptide.



Immunofluorescence analysis of A549 cells, using Keratin 10 antibody A02305.

1 Publications Citing This Product

1. PubMed ID: 24391454, Localization of Human Mesenchymal Stem Cells from Umbilical Cord Blood and Their Role in Repair of Diabetic Foot Ulcers in Rats

Visit bosterbio.com/anti-keratin-10-antibody-a02305-boster.html to see all 1 publications.

Submit a product review to Biocompare.com

Submit a review of this product to Biocompare.com to receive a \$20 Amazon.com giftcard! Your reviews help your fellow scientists make the right decisions. Thank you for your contribution.



Anti-Keratin 10 KRT10 Antibody