

## Anti-Protein diaphanous homolog 1 DIAPH1 Antibody

Catalog Number: A02308-1

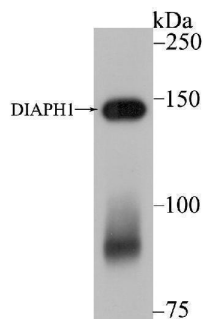
### Overview

Product Name	Anti-Protein diaphanous homolog 1 DIAPH1 Antibody
Reactive Species	Human
Description	Boster Bio Anti-Protein diaphanous homolog 1 DIAPH1 Antibody catalog # A02308-1. Tested in WB,ICC,IF,IHC applications. This antibody reacts with Human.
Application	IF, IHC, ICC, WB
Clonality	Polyclonal
Formulation	Rabbit IgG, 1mg/ml in PBS with 0.02% sodium azide, 50% glycerol, pH7.2
Storage Instructions	Store at -20°C for one year. For short term storage and frequent use, store at 4°C for up to one month. Avoid repeated freeze-thaw cycles.
Host	Rabbit
Uniprot ID	O60610

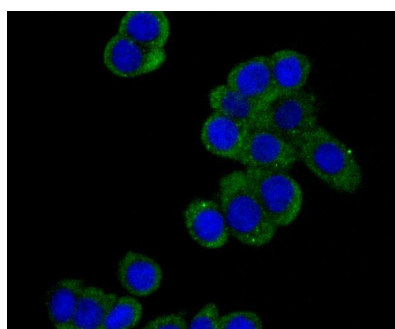
### Technical Details

Immunogen	Recombinant protein corresponding to N-terminal human DIAPH1.
Isotype	IgG
Form	Liquid
Concentration	1 mg/ml
Purification	ProA affinity purified
Suggested Dilutions	WB: 1:5,000-1:10,000 ICC: 1:50 IHC: 1:50-1:100

## Anti-Protein diaphanous homolog 1 DIAPH1 Antibody (A02308-1) Images



Western blot analysis of DIAPH1 on SiHa cell lysate using anti-DIAPH1 antibody at 1/5,000 dilution.



ICC staining DIAPH1 in LOVO cells (green). The nuclear counter stain is DAPI (blue). Cells were fixed in paraformaldehyde, permeabilised with 0.25% Triton X100/PBS.

### Submit a product review to [Biocompare.com](https://www.biocompare.com)

Submit a review of this product to [Biocompare.com](https://www.biocompare.com) to receive a \$20 Amazon.com giftcard! Your reviews help your fellow scientists make the right decisions. Thank you for your contribution.



Anti-Protein diaphanous homolog 1 DIAPH1 Antibody

For Research Use Only. Not for use in diagnostic procedures.