

Anti-ILF3 Antibody

Catalog Number: A02313-2

Overview

Product Name	Anti-ILF3 Antibody
Reactive Species	Human, Mouse, Rat
Description	Boster Bio Anti-ILF3 Antibody catalog # A02313-2. Tested in WB,IP,ICC,IF,IHC,Flow Cytometry applications. This antibody reacts with Human,Mouse,Rat.
Application	Flow Cytometry, IP, IF, IHC, ICC, WB
Clonality	Polyclonal
Formulation	Rabbit IgG, 1mg/ml in PBS with 0.02% sodium azide, 50% glycerol, pH7.2
Storage Instructions	Store at -20°C for one year. For short term storage and frequent use, store at 4°C for up to one month. Avoid repeated freeze-thaw cycles.
Host	Rabbit
Uniprot ID	Q12906

Technical Details

Immunogen	Recombinant protein of N-terminal human ILF3.
Isotype	IgG
Form	Liquid
Concentration	1 mg/ml
Purification	ProA affinity purified
Suggested Dilutions	WB: 1:500-1:2,000 ICC: 1:50-1:200 IHC: 1:50-1:200 FC: 1:50-1:100 IP: 1:10-1:50

Anti-ILF3 Antibody (A02313-2) Images

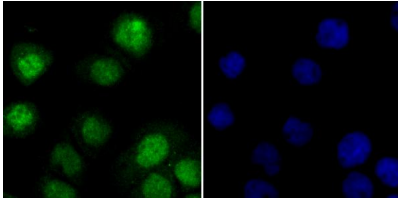


Figure 2. Immunocytochemistry staining of ILF3 using Anti-ILF3 Antibody (A02313-2).

ICC staining ILF3 in A431 cells (green). The nuclear counter stain is DAPI (blue). Cells were fixed in paraformaldehyde

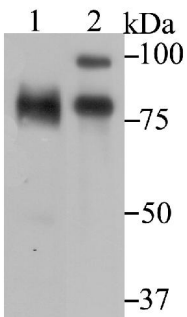


Figure 1. Western blotting validation for Anti-ILF3 Antibody A02313-2

Western blot analysis of ILF3 on rat heart tissue (1) and 293 cell (2) lysate using anti-ILF3 antibody at 1/1

Submit a product review to Biocompare.com

Submit a review of this product to Biocompare.com to receive a \$20 Amazon.com giftcard! Your reviews help your fellow scientists make the right decisions. Thank you for your contribution.



Anti-ILF3 Antibody