

Anti-Phospho-Synaptotagmin 1/2 (T202/199) SYT1 Antibody

Catalog Number: A02314T202

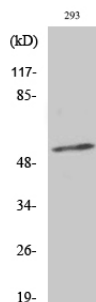
Overview

Product Name	Anti-Phospho-Synaptotagmin 1/2 (T202/199) SYT1 Antibody
Reactive Species	Human, Mouse, Rat
Description	Boster Bio Anti-Phospho-Synaptotagmin 1/2 (T202/199) SYT1 Antibody catalog # A02314T202. Tested in WB, IHC, IF, ELISA applications. This antibody reacts with Human, Mouse, Rat.
Application	ELISA, IF, IHC, WB
Clonality	Polyclonal
Formulation	Liquid in PBS containing 50% glycerol, 0.5% stabilizing protein and 0.02% sodium azide. *This antibody is supplied in a stabilized formulation. Compatibility with conjugation reactions depends on the chemistry of the conjugation method used. For conjugation methods that are not compatible with the stabilizing components present in this formulation, a carrier-free antibody format is required.
Storage Instructions	Store at -20°C for one year. For short term storage and frequent use, store at 4°C for up to one month. Avoid repeated freeze-thaw cycles.
Host	Rabbit
Uniprot ID	P21579

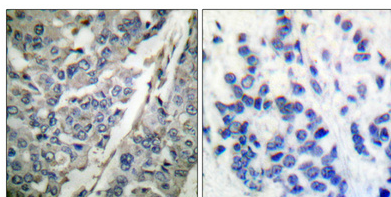
Technical Details

Immunogen	The antiserum was produced against synthesized peptide derived from human Synaptotagmin around the phosphorylation site of Thr202. AA range:176-225
Isotype	IgG
Form	Liquid
Concentration	1 mg/ml
Purification	The antibody was affinity-purified from rabbit antiserum by affinity-chromatography using epitope-specific immunogen.
Suggested Dilutions	WB 1:500-1:2000 IHC 1:100-1:300 ELISA 1:40000 IF 1:50-200

Anti-Phospho-Synaptotagmin 1/2 (T202/199) SYT1 Antibody (A02314T202) Images



Western blotting validation for Anti-Phospho-Synaptotagmin 1/2 (T202/199) SYT1 Antibody A02314T202 Western Blot (WB) analysis of specific cells using Phospho-Synaptotagmin 1/2 (T202/199) polyclonal antibody. Electrophoresis was performed on a SDS-PAGE gel. To determine SDS-PAGE gel concentration



Immunohistochemistry validation of SYT1 using Anti-Phospho-Synaptotagmin 1/2 (T202/199) SYT1 Antibody (A02314T202). Immunohistochemical analysis of paraffin-embedded Human breast cancer. Antibody was diluted at 1:100 (4°C)

Submit a product review to Biocompare.com

Submit a review of this product to Biocompare.com to receive a \$20 Amazon.com giftcard! Your reviews help your fellow scientists make the right decisions. Thank you for your contribution.



Anti-Phospho-Synaptotagmin 1/2 (T202/199) SYT1 Antibody
For Research Use Only. Not for use in diagnostic procedures.