

Anti-PTPRJ/Dep1 Antibody

Catalog Number: A02319-1

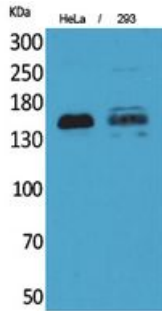
Overview

Product Name	Anti-PTPRJ/Dep1 Antibody
Reactive Species	Human, Mouse, Rat
Description	Boster Bio Anti-PTPRJ/Dep1 Antibody (Catalog# A02319-1). Tested in WB, IHC, ICC, IF, ELISA applications. This antibody reacts with Human, Mouse, Rat.
Application	ELISA, IF, IHC, ICC, WB
Clonality	Polyclonal
Formulation	PBS containing 50% glycerol, 0.5% stabilizing protein and 0.02% sodium azide. *This antibody is supplied in a stabilized formulation. Compatibility with conjugation reactions depends on the chemistry of the conjugation method used. For conjugation methods that are not compatible with the stabilizing components present in this formulation, a carrier-free antibody format is required.
Storage Instructions	Store at -20°C for one year. For short-term storage and frequent use, store at 4°C for up to one month. Avoid repeated freeze-thaw cycles.
Host	Rabbit
Uniprot ID	Q12913

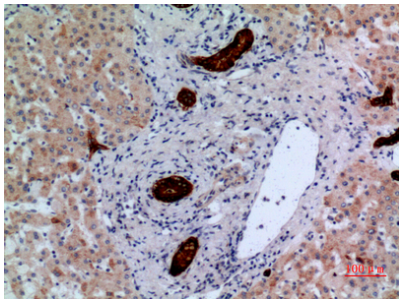
Technical Details

Immunogen	A peptide derived from the Internal region of human PTPRJ. Immunogen sequence location: 861 - 910
Cross Reactivity	No cross reactivity with other proteins.
Isotype	Rabbit IgG
Form	Liquid
Concentration	0.5-1mg/ml, actual concentration vary by lot. Use suggested dilution ratio to decide dilution procedure.
Purification	The antibody was affinity-purified from rabbit antiserum by affinity-chromatography using peptide.
Suggested Dilutions	WB 1:500 - 1:2000. IHC: 1:100-1:300. ELISA: 1:20000. ICC/IF 1:50-200

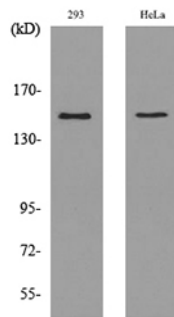
Anti-PTPRJ/Dep1 Antibody (A02319-1) Images



Western Blot analysis of HeLa, 293 cells using CD148 Polyclonal Antibody. Secondary antibody was diluted at 1:20000.



Immunohistochemical analysis of paraffin-embedded human liver, antibody was diluted at 1:100



Western blot analysis of lysate from 293, HeLa cells, using PTPRJ Antibody.

Submit a product review to Biocompare.com

Submit a review of this product to Biocompare.com to receive a \$20 Amazon.com giftcard! Your reviews help your fellow scientists make the right decisions. Thank you for your contribution.



Anti-PTPRJ/Dep1 Antibody

For Research Use Only. Not for use in diagnostic procedures.