

## Anti-Sentrin-specific protease 2 SENP2 Rabbit Polyclonal Antibody

Catalog Number: A02329

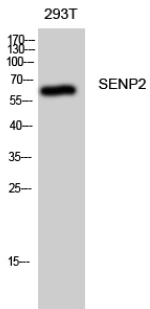
### Overview

Product Name	Anti-Sentrin-specific protease 2 SENP2 Rabbit Polyclonal Antibody
Reactive Species	Human, Mouse, Rat
Description	Boster Bio Anti-Sentrin-specific protease 2 SENP2 Rabbit Polyclonal Antibody catalog # A02329. Tested in WB, IHC, IF, ELISA applications. This antibody reacts with Human, Mouse, Rat.
Application	ELISA, IF, IHC, WB
Clonality	Polyclonal
Formulation	Liquid in PBS containing 50% glycerol, 0.5% BSA and 0.02% sodium azide.
Storage Instructions	Store at -20°C for one year. For short term storage and frequent use, store at 4°C for up to one month. Avoid repeated freeze-thaw cycles.
Host	Rabbit
Uniprot ID	Q9HC62

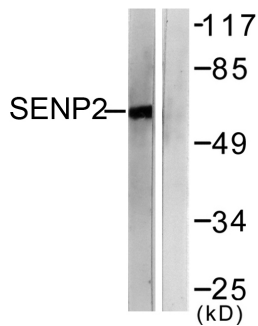
### Technical Details

Immunogen	The antiserum was produced against synthesized peptide derived from human SENP2. AA range:481-530
Isotype	IgG
Form	Liquid
Concentration	1 mg/ml
Purification	The antibody was affinity-purified from rabbit antiserum by affinity chromatography using epitope-specific immunogen.
Suggested Dilutions	WB 1:500-1:2000 IHC 1:100-1:300 ELISA 1:20000 IF 1:50-200

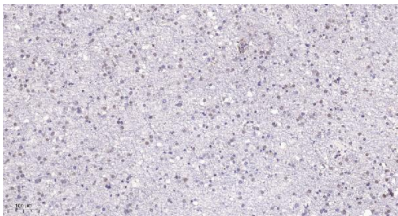
## Anti-Sentrin-specific protease 2 SENP2 Rabbit Polyclonal Antibody (A02329) Images



Western Blot analysis of 293T cells using SENP2 Polyclonal Antibody diluted at 1:1000



Western blot analysis of lysates from MDA-MB-435 cells, using SENP2 Antibody. The lane on the right is blocked with the synthesized peptide.



Immunohistochemical analysis of paraffin-embedded human brain. 1, Tris-EDTA, pH9.0 was used for antigen retrieval. 2 Antibody was diluted at 1:200 (4° overnight). 3, Secondary antibody was diluted at 1:200 (room temperature, 45min).

### Submit a product review to Biocompare.com

Submit a review of this product to Biocompare.com to receive a \$20 Amazon.com giftcard! Your reviews help your fellow scientists make the right decisions. Thank you for your contribution.



Anti-Sentrin-specific protease 2 SENP2 Rabbit Polyclonal Antibody

For Research Use Only. Not for use in diagnostic procedures.