

## Anti-MX2 Antibody

Catalog Number: A02330-1

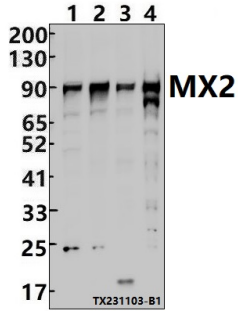
### Overview

Product Name	Anti-MX2 Antibody
Reactive Species	Human, Mouse, Rat
Description	Boster Bio Anti-MX2 Antibody catalog # A02330-1. Tested in WB applications. This antibody reacts with Human, Mouse, Rat.
Application	WB
Clonality	Polyclonal
Formulation	Rabbit IgG, 1mg/ml in PBS with 0.02% sodium azide, 50% glycerol, pH7.2
Storage Instructions	Store at -20°C for one year. For short term storage and frequent use, store at 4°C for up to one month. Avoid repeated freeze-thaw cycles.
Host	Rabbit
Uniprot ID	P20592

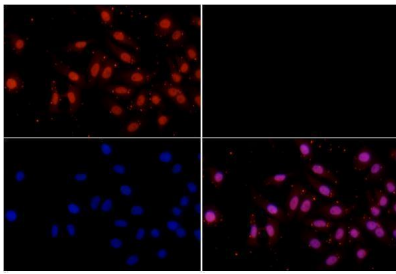
### Technical Details

Immunogen	Recombinant full length Human MX2.
Isotype	IgG
Form	Liquid
Concentration	1 mg/ml
Purification	The antibody was affinity-purified from rabbit antiserum by affinity-chromatography using epitope-specific immunogen and the purity is > 95% (by SDS-PAGE).
Suggested Dilutions	WB: 1:500-1:1000

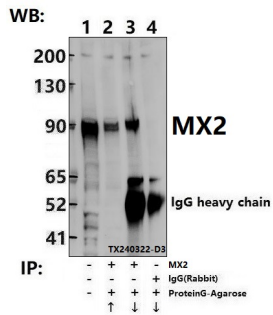
## Anti-MX2 Antibody (A02330-1) Images



Western blot (WB) analysis of MX2 polyclonal antibody at 1:1000 dilution Lane1:A431 cell lysate(30ug) Lane2:Jurkat cell lysate(30ug) Lane3:HepG2 cell lysate(30ug) Lane4:THP-1 cell lysate(30ug)



Immunofluorescence analysis of HepG2 cells using MX2 pAb at dilution of 1:50.



Immunoprecipitation of HepG2 cell lysates using MX2 pAb (Sepharose Bead Conjugate)#BD0048 (lane 2 and lane3) and Nonspecific IgG Control (Sepharose Bead Conjugate)#BD0048 (lane 4) .Lane 1 is 30% input. The western blot was probed using MX2 pAb.

## Submit a product review to Biocompare.com

Submit a review of this product to Biocompare.com to receive a \$20 Amazon.com giftcard! Your reviews help your fellow scientists make the right decisions. Thank you for your contribution.



Anti-MX2 Antibody

For Research Use Only. Not for use in diagnostic procedures.