

## Anti-Stromal interaction molecule 2 Stim2 Antibody

Catalog Number: A02345-1

### About STIM2

Stim II antibody functions as a calcium sensor in the endoplasmic reticulum via its EF-hand domain. After depletion of Ca<sup>2+</sup>, it is thought to translocate from the endoplasmic reticulum to the plasma membrane to activate the calcium release-activated channel subunit. It may inhibit STIM1-mediated calcium influx. Anti-Stim II antibody is ideal for investigators interested in Signal Transduction research.

### Overview

Product Name	Anti-Stromal interaction molecule 2 Stim2 Antibody
Reactive Species	Human
Description	Boster Bio Anti-Stromal interaction molecule 2 Stim2 Antibody (Catalog # A02345-1). Tested in IHC applications. This antibody reacts with Human.
Application	ELISA, IHC, WB
Clonality	Polyclonal
Formulation	0.02 M Potassium Phosphate, 0.15 M Sodium Chloride, pH 7.2, 30% Glycerol
Storage Instructions	Store vial at -20°C prior to opening. Aliquot contents and freeze at -20°C or below for extended storage. Avoid cycles of freezing and thawing. Centrifuge product if not completely clear after standing at room temperature. This product is stable for several weeks at 4°C as an undiluted liquid. Dilute only prior to immediate use. Expiration date is one (1) year from date of opening. (Ship on dry ice.)
Host	Sheep
Uniprot ID	Q9P246

### Technical Details

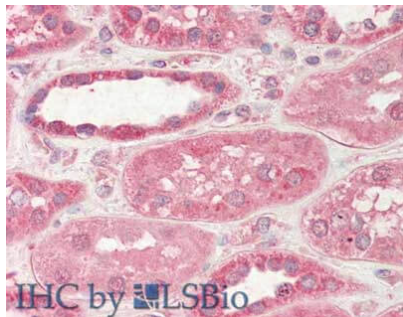
Immunogen	Stim II affinity purified antibody was prepared from whole sheep serum produced by repeated immunizations with a synthetic peptide near the C-terminus of human Stim II.
Isotype	IgG
Form	Liquid (sterile filtered)
Concentration	1.1 mg/mL by UV absorbance at 280 nm
Purification	Anti-Stim II was affinity purified from monospecific antiserum by immunoaffinity chromatography. A BLAST analysis was used to suggest cross-reactivity with mouse and human based on 100% sequence homology. Cross-reactivity with Stim II from other sources has not been determined.
Suggested Dilutions	ELISA: 1: 10,000

IHC: 5 µg/mL

WB: 1ug/ml

Anti-Stim II antibody is tested for ELISA and immunohistochemistry and suitable for Western Blot. Specific conditions for reactivity should be optimized by the end user. Expect a band approximately ~84kDa corresponding to the appropriate cell lysate or extract.

## Anti-Stromal interaction molecule 2 Stim2 Antibody (A02345-1) Images



Immunohistochemistry of Sheep anti-STIM2 antibody.  
Tissue: Kidney. Fixation: formalin fixed paraffin embedded.  
Antigen retrieval: not required. Primary antibody: STIM2 antibody at 5 µg/mL for 1 h at RT. Secondary antibody: Peroxidase sheep secondary antibody at 1:10,000 for 45 min at RT. Staining: STIM2 as precipitated red signal with hematoxylin purple nuclear counterstain.

### Submit a product review to Biocompare.com

Submit a review of this product to Biocompare.com to receive a \$20 Amazon.com giftcard! Your reviews help your fellow scientists make the right decisions. Thank you for your contribution.



Anti-Stromal interaction molecule 2 Stim2 Antibody

For Research Use Only. Not for use in diagnostic procedures.