

Anti-Stromal interaction molecule 2 STIM2 Antibody

Catalog Number: A02345-2

About STIM2

In T lymphocytes, the sole pathway for Ca⁺⁺ entry following antigen-receptor binding is through store-operated Ca⁺⁺-release-activated Ca⁺⁺ (CRAC) channels. These channels are made up of the pore-forming subunit ORAI1 and the stromal interaction molecule 1 (STIM1), a protein that functions as a Ca⁺⁺ sensor and activates the CRAC channels, migrating to the plasma membrane from endoplasmic reticulum (ER)-like sites which act as the Ca⁺⁺ store. A related molecule, STIM2, acts to inhibit the STIM1-mediated store-operated Ca⁺⁺ entry, and can form complexes with STIM1, suggesting they may play a coordinated role in controlling Ca⁺⁺ entry. At least three isoforms of STIM2 are known to exist. This STIM2 antibody is predicted to have no cross-reactivity to STIM1.

Overview

| | |
|----------------------|---|
| Product Name | Anti-Stromal interaction molecule 2 STIM2 Antibody |
| Reactive Species | Human, Mouse, Rat |
| Description | Boster Bio Anti-Stromal interaction molecule 2 STIM2 Antibody (Catalog # A02345-2). Tested in ELISA, WB, IHC-P, IF applications. This antibody reacts with Human, Mouse, Rat. |
| Application | ELISA, IF, IHC-P, WB |
| Clonality | Polyclonal |
| Formulation | STIM2 Antibody is supplied in PBS containing 0.02% sodium azide. |
| Storage Instructions | STIM2 antibody can be stored at 4°C up to one year. Antibodies should not be exposed to prolonged high temperatures. |
| Host | Rabbit |
| Uniprot ID | Q9P246 |

Technical Details

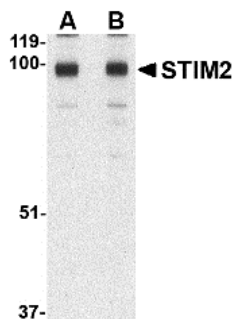
| | |
|----------------------------|--|
| Immunogen | STIM2 antibody was raised against a 18 amino acid synthetic peptide from near the carboxy terminus of human STIM2. The immunogen is located within the last 50 amino acids of STIM2. |
| Predicted Reactive Species | Chicken |
| Isotype | IgG |
| Form | Liquid |
| Concentration | 1 mg/mL |
| Purification | STIM2 Antibody is affinity chromatography purified via peptide column. |

Suggested Dilutions

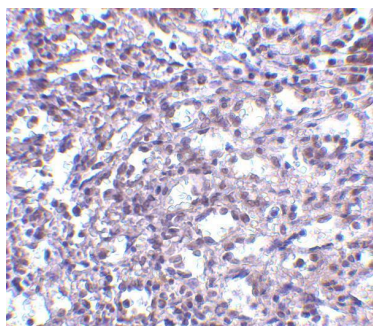
STIM2 antibody can be used for detection of STIM2 by Western blot at 0.5 - 1 ug/mL. Antibody can also be used for immunohistochemistry starting at 2.5 ug/mL. For immunofluorescence start at 20 ug/mL.

Antibody validated: Western Blot in mouse samples; Immunohistochemistry in human samples and Immunofluorescence in human samples. All other applications and species not yet tested. Optimal dilutions for each application should be determined by the researcher.

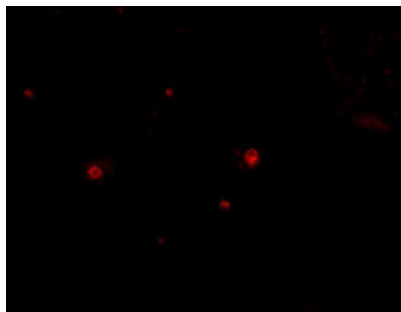
Anti-Stromal interaction molecule 2 STIM2 Antibody (A02345-2) Images



Western blot analysis of STIM2 in A-20 cell lysate with STIM2 antibody at (A) 0.5 and (B) 1 ug/mL.



Immunohistochemistry of STIM2 in human spleen tissue with STIM2 antibody at 2.5 ug/mL.



Immunofluorescence of STIM2 in Human Spleen cells with STIM2 antibody at 20 ug/mL.

Submit a product review to [Biocompare.com](https://www.biocompare.com)

Submit a review of this product to [Biocompare.com](https://www.biocompare.com) to receive a \$20 Amazon.com giftcard! Your reviews help your fellow scientists make the right decisions. Thank you for your contribution.



Anti-Stromal interaction molecule 2 STIM2 Antibody

For Research Use Only. Not for use in diagnostic procedures.