

Anti-MAD2L2/Mad2B Antibody

Catalog Number: A02357

About MAD2L2

MAD2L2 is also known as MAD2B, REV7 and mitotic arrest deficient-like 2 protein. MAD2L2 is a component of the mitotic spindle assembly checkpoint that prevents the onset of anaphase until all chromosomes are properly aligned at the metaphase plate. MAD2L2 is a homolog of MAD2L1.

Overview

Product Name	Anti-MAD2L2/Mad2B Antibody
Reactive Species	Human
Description	Boster Bio Anti-MAD2L2/Mad2B Antibody (Catalog # A02357). Tested in ELISA, IHC, WB applications. This antibody reacts with Human.
Application	ELISA, IHC, WB
Clonality	Polyclonal
Formulation	0.02 M Potassium Phosphate, 0.15 M Sodium Chloride, pH 7.2, 0.01% (w/v) Sodium Azide
Storage Instructions	Store vial at -20°C prior to opening. Aliquot contents and freeze at -20°C or below for extended storage. Avoid cycles of freezing and thawing. Centrifuge product if not completely clear after standing at room temperature. This product is stable for several weeks at 4°C as an undiluted liquid. Dilute only prior to immediate use. Expiration date is one (1) year from date of opening. (Ship on dry ice.)
Host	Rabbit
Uniprot ID	Q9UI95

Technical Details

Immunogen	This affinity purified antibody was prepared from whole rabbit serum produced by repeated immunizations with a synthetic peptide corresponding to an N-terminus region of Human MAD2L2.
Predicted Reactive Species	Bovine, Pufferfish, Zebrafish
Isotype	IgG
Form	Liquid (sterile filtered)
Concentration	0.68 mg/mL by UV absorbance at 280 nm
Purification	This is an affinity purified antibody produced by immunoaffinity chromatography using the immunizing peptide after immobilization to a solid phase.

Suggested Dilutions

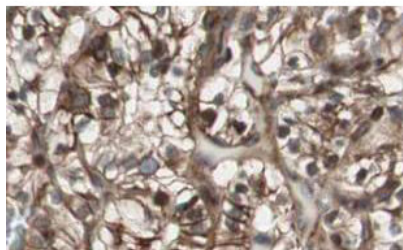
ELISA: 1:7,500 - 1:30,000

IHC: 1:500 - 1:2,000

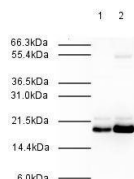
WB: 1:500 - 1:2,000

This affinity purified antibody has been tested for use in ELISA, immunohistochemistry and western blot. For western blotting HeLa whole cell lysates and nuclear extracts are suggested. Reactivity in other immunoassays is unknown. Antibody activity can be blocked using a control peptide (000-001-470).

Anti-MAD2L2/Mad2B Antibody (A02357) Images



Boster's Affinity Purified anti-MAD2L2 antibody shows strong nuclear and cytoplasmic staining of tumor cells in cancerous human kidney tissue. Tissue was formalin-fixed and paraffin embedded. Brown color indicates presence of protein, blue color shows cell nuclei. Personal Communication, Kenneth Wester, www.proteinatlas.org, Uppsala, Sweden.



Affinity Purified Rabbit anti-MAD2L2 was used at a 1:500 dilution to detect human MAD2L2 by western blot. Lane 1: HeLa whole cell lysate and nuclear lysate were probed using this antibody. This antibody clearly detects a ~20 kDa band corresponding to human MAD2L2 (predicted molecular weight is 24 kDa). Approximately 20 µg of each lysate was loaded on a 10% SDS-PAGE. Primary antibody was reacted with the membrane at room temperature for 1 h. After subsequent washing, a 1:2,000 dilution of HRP conjugated Gt-a-Rabbit IgG was used for visualization. Exposure time was 30 sec.

Submit a product review to Biocompare.com

Submit a review of this product to Biocompare.com to receive a \$20 Amazon.com giftcard! Your reviews help your fellow scientists make the right decisions. Thank you for your contribution.



Anti-MAD2L2/Mad2B Antibody

For Research Use Only. Not for use in diagnostic procedures.