

Anti-MAD2L2 Antibody (C-term)

Catalog Number: A02357-3

About MAD2L2

Adapter protein able to interact with different proteins and involved in different biological processes. Mediates the interaction between the error-prone DNA polymerase zeta catalytic subunit REV3L and the inserter polymerase REV1, thereby mediating the second polymerase switching in translesion DNA synthesis. Translesion DNA synthesis releases the replication blockade of replicative polymerases, stalled in presence of DNA lesions. May also regulate another aspect of cellular response to DNA damage through regulation of the JNK-mediated phosphorylation and activation of the transcriptional activator ELK1. Inhibits the FZR1- and probably CDC20-mediated activation of the anaphase promoting complex APC thereby regulating progression through the cell cycle. Regulates TCF7L2-mediated gene transcription and may play a role in epithelial-mesenchymal transdifferentiation.

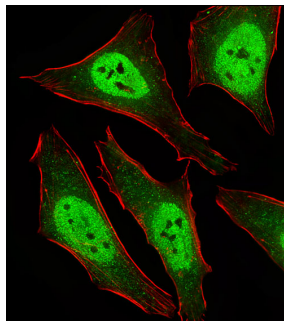
Overview

Product Name	Anti-MAD2L2 Antibody (C-term)
Reactive Species	Mouse
Description	Boster Bio Anti-MAD2L2 Antibody (C-term) (Catalog # A02357-3). Tested in IF, IHC-P, WB application(s). This antibody reacts with Mouse.
Application	IF, IHC-P, WB
Clonality	Polyclonal
Formulation	Purified polyclonal antibody supplied in PBS with 0.09% (W/V) sodium azide.
Storage Instructions	Maintain refrigerated at 2-8°C for up to 2 weeks. For long-term storage, store at -20°C in small aliquots to prevent freeze-thaw cycles.
Host	Rabbit
Uniprot ID	Q9UI95

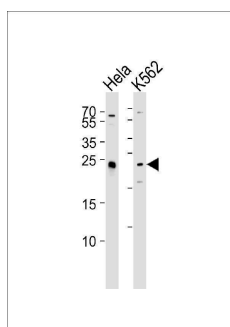
Technical Details

Immunogen	This MAD2L2 antibody is generated from a rabbit immunized with a KLH conjugated synthetic peptide between 198-231 amino acids from the C-terminal region of human MAD2L2.
Predicted Reactive Species	Pig
Isotype	Rabbit IgG
Purification	This antibody is purified through a protein A column, followed by peptide affinity purification.
Suggested Dilutions	IF: 1:25 WB: 1:1000 IHC-P: 1:25

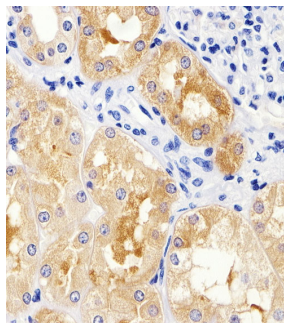
Anti-MAD2L2 Antibody (C-term) (A02357-3) Images



Fluorescent image of HeLa cells stained with MAD2L2 Antibody (C-term). A02357-3 was diluted at 1:25 dilution. An Alexa Fluor 488-conjugated goat anti-rabbit IgG at 1:400 dilution was used as the secondary antibody (green). Cytoplasmic actin was counterstained with Alexa Fluor® 555 conjugated with Phalloidin (red).



Western blot analysis of lysates from HeLa, K562 cell line (from left to right), using MAD2L2 Antibody (C-term). A02357-3 was diluted at 1:1000 at each lane. A goat anti-rabbit IgG H&L(HRP) at 1:5000 dilution was used as the secondary antibody. Lysates at 35ug per lane.



Immunohistochemical analysis of paraffin-embedded H. kidney section using MAD2L2 Antibody (C-term). A02357-3 was diluted at 1:25 dilution. A peroxidase-conjugated goat anti-rabbit IgG at 1:400 dilution was used as the secondary antibody, followed by DAB staining.

Submit a product review to [Biocompare.com](https://www.biocompare.com)

Submit a review of this product to [Biocompare.com](https://www.biocompare.com) to receive a \$20 Amazon.com giftcard! Your reviews help your fellow scientists make the right decisions. Thank you for your contribution.



Anti-MAD2L2 Antibody (C-term)

For Research Use Only. Not for use in diagnostic procedures.