

Anti-EAAT3/SLC1A1 Antibody Picoband®

Catalog Number: A02367-1

About SLC1A1

Solute carrier family 1 member 1, also called SLC1A1, is a protein that in humans is encoded by the SLC1A1 gene. By Southern analysis of a panel of human/rodent somatic cell hybrids and by fluorescence in situ hybridization (FISH), this gene is mapped to 9p24.2. This gene encodes a member of the high-affinity glutamate transporters that play an essential role in transporting glutamate across plasma membranes. In brain, these transporters are crucial in terminating the postsynaptic action of the neurotransmitter glutamate, and in maintaining extracellular glutamate concentrations below neurotoxic levels. This transporter also transports aspartate, and mutations in this gene are thought to cause dicarboxylic amino aciduria, also known as glutamate-aspartate transport defect.

Overview

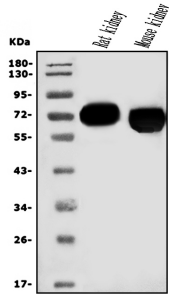
Product Name	Anti-EAAT3/SLC1A1 Antibody Picoband®
Reactive Species	Human, Mouse, Rat
Description	Boster Bio Anti-EAAT3/SLC1A1 Antibody Picoband® catalog # A02367-1. Tested in ELISA, WB applications. This antibody reacts with Human, Mouse, Rat. The brand Picoband indicates this is a premium antibody that guarantees superior quality, high affinity, and strong signals with minimal background in Western blot applications. Only our best-performing antibodies are designated as Picoband, ensuring unmatched performance.
Application	ELISA, WB
Clonality	Polyclonal
Formulation	Each vial contains 4mg Trehalose, 0.9mg NaCl, 0.2mg Na ₂ HPO ₄ , 0.01mg NaN ₃ .
Storage Instructions	Store at -20°C for one year from date of receipt. After reconstitution, at 4°C for one month. It can also be aliquotted and stored frozen at -20°C for six months. Avoid repeated freeze-thaw cycles.
Host	Rabbit
Uniprot ID	P43005

Technical Details

Immunogen	E.coli-derived human EAAT3/SLC1A1 recombinant protein (Position: Q160-F524).
Recommended Detection Systems	Boster recommends Enhanced Chemiluminescent Kit with anti-Rabbit IgG (EK1002) for Western blot.
Cross Reactivity	No cross-reactivity with other proteins
Isotype	Rabbit IgG
Form	Lyophilized

Concentration	Adding 0.2 ml of distilled water will yield a concentration of 500 ug/ml.
Purification	Immunogen affinity purified.
Suggested Dilutions	Western blot, 0.25-0.5ug/ml, Mouse, Rat ELISA, 0.1-0.5ug/ml, -

Anti-EAAT3/SLC1A1 Antibody Picoband® (A02367-1) Images



Western blot analysis of EAAT3/SLC1A1 using anti-EAAT3/SLC1A1 antibody (A02367-1). Electrophoresis was performed on a 5-20% SDS-PAGE gel at 70V (Stacking gel) / 90V (Resolving gel) for 2-3 hours. The sample well of each lane was loaded with 50ug of sample under reducing conditions. Lane 1: rat kidney tissue lysates, Lane 2: mouse kidney tissue lysates. After Electrophoresis, proteins were transferred to a Nitrocellulose membrane at 150mA for 50-90 minutes. Blocked the membrane with 5% Non-fat Milk/TBS for 1.5 hour at RT. The membrane was incubated with rabbit anti-EAAT3/SLC1A1 antigen affinity purified polyclonal antibody (Catalog # A02367-1) at 0.5 ug/mL overnight at 4°C, then washed with TBS-0.1%Tween 3 times with 5 minutes each and probed with a goat anti-rabbit IgG-HRP secondary antibody at a dilution of 1:5000 for 1.5 hour at RT. The signal is developed using an Enhanced Chemiluminescent detection (ECL) kit (Catalog # EK1002) with Tanon 5200 system. A specific band was detected for EAAT3/SLC1A1 at approximately 70KD. The expected band size for EAAT3/SLC1A1 is at 70KD.

Submit a product review to Biocompare.com

Submit a review of this product to Biocompare.com to receive a \$20 Amazon.com giftcard! Your reviews help your fellow scientists make the right decisions. Thank you for your contribution.



Anti-EAAT3/SLC1A1 Antibody

For Research Use Only. Not for use in diagnostic procedures.