

Anti-DNA Ligase I (E139) LIG1 Antibody

Catalog Number: A02380

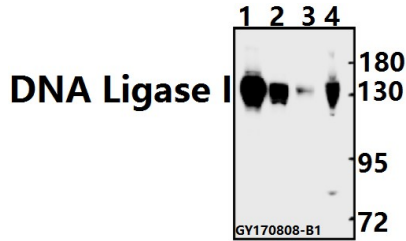
Overview

Product Name	Anti-DNA Ligase I (E139) LIG1 Antibody
Reactive Species	Human
Description	Boster Bio Anti-DNA Ligase I (E139) LIG1 Antibody catalog # A02380. Tested in WB,IHC applications. This antibody reacts with Human.
Application	IHC, WB
Clonality	Polyclonal
Formulation	Rabbit IgG, 1mg/ml in PBS with 0.02% sodium azide, 50% glycerol, pH7.2
Storage Instructions	Store at -20°C for one year. For short term storage and frequent use, store at 4°C for up to one month. Avoid repeated freeze-thaw cycles.
Host	Rabbit
Uniprot ID	P18858

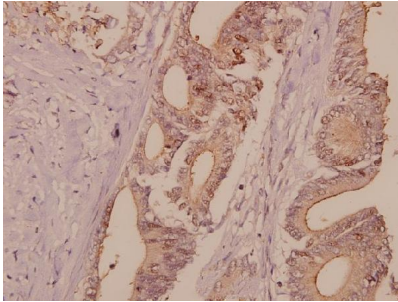
Technical Details

Immunogen	Synthetic peptide, corresponding to amino acids 110-160 of Human DNA Ligase I.
Isotype	IgG
Form	Liquid
Concentration	1 mg/ml
Purification	The antibody was affinity-purified from rabbit antiserum by affinity-chromatography using epitope-specific immunogen and the purity is > 95% (by SDS-PAGE).
Suggested Dilutions	WB: 1:500-1:1000 IHC: 1:50-1:200

Anti-DNA Ligase I (E139) LIG1 Antibody (A02380) Images



Western blot (WB) analysis of DNA Ligase I (E139) pAb at 1:500 dilution. Lane1:K562 whole cell lysate(40ug) Lane2:L02 whole cell lysate(40ug) Lane3:Jurkat whole cell lysate(40ug) Lane4:A549 whole cell lysate(10ug)



Immunohistochemistry (IHC) analyzes of DNA Ligase I (E139) pAb in paraffin-embedded human colorectal carcinoma tissue at 1:50.

Submit a product review to Biocompare.com

Submit a review of this product to Biocompare.com to receive a \$20 Amazon.com giftcard! Your reviews help your fellow scientists make the right decisions. Thank you for your contribution.



Anti-DNA Ligase I (E139) LIG1 Antibody

For Research Use Only. Not for use in diagnostic procedures.