

Anti-DNA Ligase I LIG1 Antibody

Catalog Number: A02380-1

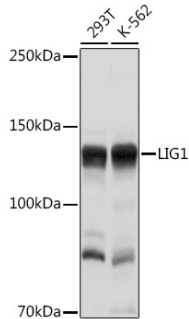
Overview

Product Name	Anti-DNA Ligase I LIG1 Antibody
Reactive Species	Human, Mouse
Description	Boster Bio Anti-DNA Ligase I LIG1 Antibody catalog # A02380-1. Tested in WB,IHC,ICC/IF applications. This antibody reacts with Human,Mouse.
Application	IF, IHC, ICC, WB
Clonality	Polyclonal
Formulation	Rabbit IgG, 1mg/ml in PBS with 0.02% sodium azide, 50% glycerol, pH7.2
Storage Instructions	Store at -20°C for one year. For short term storage and frequent use, store at 4°C for up to one month. Avoid repeated freeze-thaw cycles.
Host	Rabbit
Uniprot ID	P18858

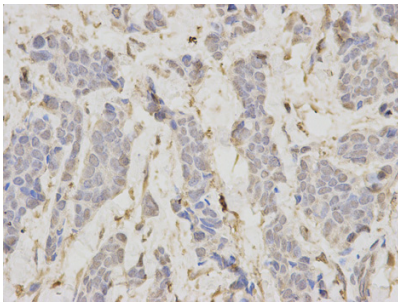
Technical Details

Immunogen	Recombinant fusion protein of human LIG1(NP_000225.1).
Isotype	IgG
Form	Liquid
Concentration	1 mg/ml
Purification	The antibody was affinity-purified from rabbit antiserum by affinity-chromatography using epitope-specific immunogen and the purity is > 95% (by SDS-PAGE).
Suggested Dilutions	WB: 1:500-1:2000 IHC: 1:50-1:200 ICC/IF: 1:50-1:200

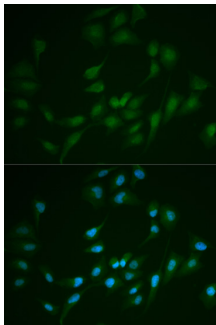
Anti-DNA Ligase I (LIG1) Antibody (A02380-1) Images



Western blot analysis of extracts of various cell lines, using LIG1 Rabbit pAb at 1:1000 dilution. Secondary antibody: HRP Goat Anti-Rabbit IgG at 1:10000 dilution. Lysates/proteins: 25ug per lane. Blocking buffer: 3% nonfat dry milk in TBST. Detection: ECL Basic Kit. Exposure time: 1s.



Immunofluorescence analysis of MCF-7 cells using LIG1 antibody. Blue: DAPI for nuclear staining.



Immunofluorescence analysis of A549 cells using LIG1 antibody.

Submit a product review to Biocompare.com

Submit a review of this product to Biocompare.com to receive a \$20 Amazon.com giftcard! Your reviews help your fellow scientists make the right decisions. Thank you for your contribution.



Anti-DNA Ligase I (LIG1) Antibody

For Research Use Only. Not for use in diagnostic procedures.