

## Anti-Caspase-2 CASP2 Antibody

Catalog Number: A02384

### About CASP2

Caspases are a family of cysteine proteases that can be divided into the apoptotic and inflammatory caspase subfamilies. Unlike the apoptotic caspases, members of the inflammatory subfamily are generally not involved in cell death but are associated with the immune response to microbial pathogens. Members of this subfamily include caspase-1, -4, -5, and -12 and can activate proinflammatory cytokines such as IL-1beta and IL-18. Although phylogenetically similar to this subfamily, Caspase-2 is thought to be involved in stress-induced apoptosis. Caspase-2 has two major isoforms; overexpression on the long form results in apoptosis while that of the short form suppresses cell death.

### Overview

Product Name	Anti-Caspase-2 CASP2 Antibody
Reactive Species	Human, Mouse
Description	Boster Bio Anti-Caspase-2 CASP2 Antibody (Catalog # A02384). Tested in ELISA, WB, ICC applications. This antibody reacts with Human, Mouse.
Application	ELISA, ICC, WB
Clonality	Polyclonal
Formulation	Caspase-2 Antibody is supplied in PBS containing 0.02% sodium azide.
Storage Instructions	Caspase-2 antibody can be stored at 4°C for three months and -20°C, stable for up to one year. Avoid repeated freeze-thaw cycles. Antibodies should not be exposed to prolonged high temperatures.
Host	Rabbit
Uniprot ID	P42575

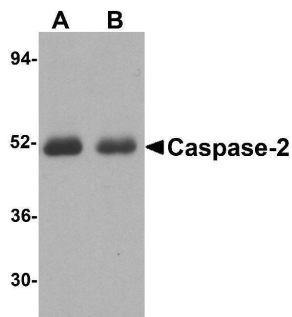
### Technical Details

Immunogen	Caspase-2 antibody was raised against a 16 amino acid synthetic peptide from the amino-terminus of human Caspase-2. The immunogen is located within the first 50 amino acids of Caspase-2.
Predicted Reactive Species	Chicken, Rat
Cross Reactivity	Depending on cell lines or tissues used, other cleavage products may be observed.
Isotype	IgG
Form	Liquid
Concentration	1 mg/mL
Purification	Caspase-2 Antibody is affinity chromatography purified via peptide column.

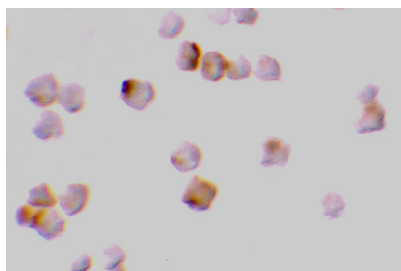
Suggested Dilutions

Caspase-2 antibody can be used for the detection of caspase-2 by Western blot at 1 ug/mL.  
Antibody can also be used for immunocytochemistry starting at 2 ug/mL.  
Antibody validated: Western Blot in human samples and Immunocytochemistry in mouse samples.  
All other applications and species not yet tested. Optimal dilutions for each application should be determined by the researcher.

## Anti-Caspase-2 CASP2 Antibody (A02384) Images



Western blot analysis of Caspase-2 in (A) human thymus tissue and (B) human kidney lysate with Caspase-2 antibody at 1 ug/mL.



Immunocytochemistry of caspase-2 in A-20 cells with caspase-2 antibody at 2 ug/mL.

### Submit a product review to Biocompare.com

Submit a review of this product to Biocompare.com to receive a \$20 Amazon.com giftcard! Your reviews help your fellow scientists make the right decisions. Thank you for your contribution.



Anti-Caspase-2 CASP2 Antibody

For Research Use Only. Not for use in diagnostic procedures.