

Anti-FANCC Antibody (C-term)

Catalog Number: A02387-1

About FANCC

The Fanconi anemia complementation group (FANCC) currently includes FANCA, FANCB, FANCC, FANCD1 (also called BRCA2), FANCD2, FANCE, FANCF, FANCG, FANCI, FANCL, FANCM and FANCN (also called PALB2). The previously defined group FANCH is the same as FANCA. Fanconi anemia is a genetically heterogeneous recessive disorder characterized by cytogenetic instability, hypersensitivity to DNA crosslinking agents, increased chromosomal breakage, and defective DNA repair. The members of the Fanconi anemia complementation group do not share sequence similarity; they are related by their assembly into a common nuclear protein complex. This protein is for complementation group C.

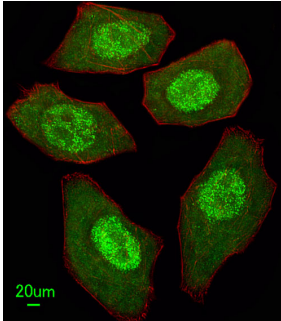
Overview

Product Name	Anti-FANCC Antibody (C-term)
Reactive Species	Human
Description	Boster Bio Anti-FANCC Antibody (C-term) (Catalog # A02387-1). Tested in WB, IF, Flow Cytometry, IHC-P application(s). This antibody reacts with Human.
Application	Flow Cytometry, IF, IHC-P, WB
Clonality	Polyclonal
Formulation	Purified polyclonal antibody supplied in PBS with 0.09% (W/V) sodium azide.
Storage Instructions	Maintain refrigerated at 2-8°C for up to 2 weeks. For long-term storage, store at -20°C in small aliquots to prevent freeze-thaw cycles.
Host	Rabbit
Uniprot ID	Q00597

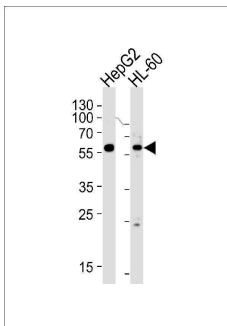
Technical Details

Immunogen	This FANCC antibody is generated from rabbits immunized with a KLH conjugated synthetic peptide between 527-555 amino acids from the C-terminal region of human FANCC.
Predicted Reactive Species	Pig
Isotype	Rabbit IgG
Purification	This antibody is purified through a protein A column, followed by peptide affinity purification.
Suggested Dilutions	IF: 1:25 WB: 1:1000 IHC-P: 1:50-1:100 FC: 1:10-1:50

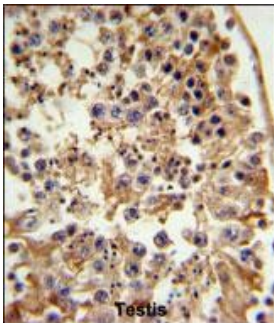
Anti-FANCC Antibody (C-term) (A02387-1) Images



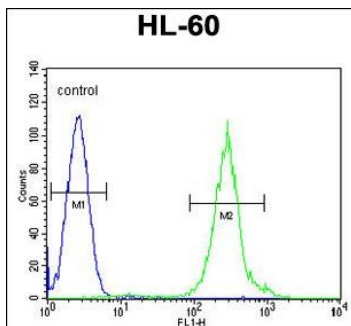
Immunofluorescent analysis of U251 cells, using FANCC Antibody (C-term). A02387-1 was diluted at 1:25 dilution. Alexa Fluor 488-conjugated goat anti-rabbit IgG at 1:400 dilution was used as the secondary antibody (green). DAPI was used to stain the cell nuclear (blue).



Western blot analysis of lysates from HepG2,HL-60 cell line (from left to right),using FANCC Antibody (C-term).A02387-1 was diluted at 1:1000 at each lane. A goat anti-rabbit IgG H&L(HRP) at 1:5000 dilution was used as the secondary antibody.Lysates at 35ug per lane.



FANCC Antibody (C-term) IHC analysis in formalin fixed and paraffin embedded testis tissue followed by peroxidase conjugation of the secondary antibody and DAB staining. This data demonstrates the use of the FANCC Antibody (C-term) for immunohistochemistry. Clinical relevance has not been evaluated.



FANCC Antibody (C-term) flow cytometric analysis of HL-60 cells (right histogram) compared to a negative control cell (left histogram).FITC-conjugated goat-anti-rabbit secondary antibodies were used for the analysis.

Submit a product review to Biocompare.com

Submit a review of this product to Biocompare.com to receive a \$20 Amazon.com giftcard! Your reviews help your fellow scientists make the right decisions. Thank you for your contribution.



Anti-FANCC Antibody (C-term)

For Research Use Only. Not for use in diagnostic procedures.