

Anti-beta 1 Spectrin/SPTB Antibody Picoband®

Catalog Number: A02392

About SPTB

Spectrin beta chain, erythrocyte is a protein that in humans is encoded by the SPTB gene. This locus encodes a member of the spectrin gene family. Spectrin proteins, along with ankyrin, play a role in cell membrane organization and stability. The protein encoded by this locus functions in stability of erythrocyte membranes, and mutations in this gene have been associated with spherocytosis type 2, hereditary elliptocytosis, and neonatal hemolytic anemia. Alternatively spliced transcript variants have been described.

Overview

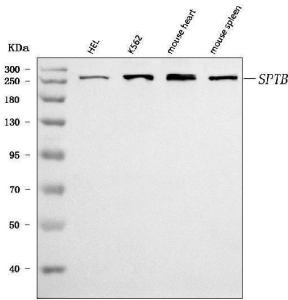
| | |
|----------------------|---|
| Product Name | Anti-beta 1 Spectrin/SPTB Antibody Picoband® |
| Reactive Species | Human, Mouse |
| Description | Boster Bio Anti-beta 1 Spectrin/SPTB Antibody Picoband® catalog # A02392. Tested in ELISA, Flow Cytometry, WB applications. This antibody reacts with Human, Mouse. The brand Picoband indicates this is a premium antibody that guarantees superior quality, high affinity, and strong signals with minimal background in Western blot applications. Only our best-performing antibodies are designated as Picoband, ensuring unmatched performance. |
| Application | ELISA, Flow Cytometry, WB |
| Clonality | Polyclonal |
| Formulation | Each vial contains 4 mg Trehalose, 0.9 mg NaCl, 0.2 mg Na ₂ HPO ₄ . |
| Storage Instructions | At -20°C for one year from date of receipt. After reconstitution, at 4°C for one month. It can also be aliquotted and stored frozen at -20°C for six months. Avoid repeated freezing and thawing. |
| Host | Rabbit |
| Uniprot ID | P11277 |

Technical Details

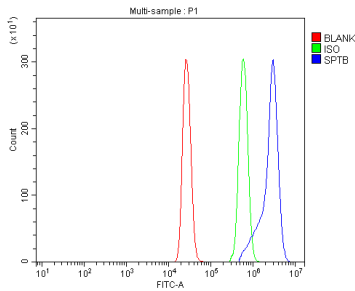
| | |
|-------------------------------|---|
| Immunogen | E.coli-derived human beta 1 Spectrin/SPTB recombinant protein (Position: M703-Y2137). |
| Recommended Detection Systems | Boster recommends Enhanced Chemiluminescent Kit with anti-Rabbit IgG (EK1002) for Western blot, |
| Cross Reactivity | No cross-reactivity with other proteins. |
| Isotype | Rabbit IgG |
| Form | Lyophilized |
| Concentration | Adding 0.2 ml of distilled water will yield a concentration of 500 µg/ml. |

| | |
|---------------------|---|
| Purification | Immunogen affinity purified. |
| Suggested Dilutions | Western blot, 0.25-0.5 ug/ml, Human, Mouse, Rat Flow Cytometry (Fixed), 1-3 ug/1x10 ⁶ cells, Human ELISA, 0.1-0.5 ug/ml, - |

Anti-beta 1 Spectrin/SPTB Antibody Picoband® (A02392) Images



Western blot analysis of beta 1 Spectrin/SPTB using anti-beta 1 Spectrin/SPTB antibody (A02392). Electrophoresis was performed on a 5-20% SDS-PAGE gel at 70V (Stacking gel) / 90V (Resolving gel) for 2-3 hours. The sample well of each lane was loaded with 30 ug of sample under reducing conditions. Lane 1: human HEL whole cell lysates, Lane 2: human K562 whole cell lysates, Lane 3: mouse heart tissue lysates, Lane 4: mouse spleen tissue lysates. After electrophoresis, proteins were transferred to a nitrocellulose membrane at 150 mA for 50-90 minutes. Blocked the membrane with 5% non-fat milk/TBS for 1.5 hour at RT. The membrane was incubated with rabbit anti-beta 1 Spectrin/SPTB antigen affinity purified polyclonal antibody (Catalog # A02392) at 0.5 ug/mL overnight at 4°C, then washed with TBS-0.1%Tween 3 times with 5 minutes each and probed with a goat anti-rabbit IgG-HRP secondary antibody at a dilution of 1:5000 for 1.5 hour at RT. The signal is developed using an Enhanced Chemiluminescent detection (ECL) kit (Catalog # EK1002) with Tanon 5200 system. A specific band was detected for beta 1 Spectrin/SPTB at approximately 270 kDa. The expected band size for beta 1 Spectrin/SPTB is at 246 kDa.



Flow Cytometry analysis of U937 cells using anti-beta 1 Spectrin/SPTB antibody (A02392). Overlay histogram showing U937 cells stained with A02392 (Blue line). To facilitate intracellular staining, cells were fixed with 4% paraformaldehyde and permeabilized with permeabilization buffer. The cells were blocked with 10% normal goat serum. And then incubated with rabbit anti-beta 1 Spectrin/SPTB Antibody (A02392, 1 ug/1x106 cells) for 30 min at 20°C. DyLight®488 conjugated goat anti-rabbit IgG (BA1127, 5-10 ug/1x106 cells) was used as secondary antibody for 30 minutes at 20°C. Isotype control antibody (Green line) was rabbit IgG (1 ug/1x106) used under the same conditions. Unlabelled sample without incubation with primary antibody and secondary antibody (Red line) was used as a blank control.

Submit a product review to Biocompare.com

Submit a review of this product to Biocompare.com to receive a \$20 Amazon.com giftcard! Your reviews help your fellow scientists make the right decisions. Thank you for your contribution.



Anti-beta 1 Spectrin/SPTB Antibody

For Research Use Only. Not for use in diagnostic procedures.