

Anti-CLIC1 Antibody

Catalog Number: A02397

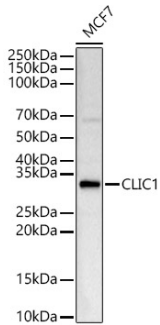
Overview

Product Name	Anti-CLIC1 Antibody
Reactive Species	Human, Mouse, Rat
Description	Boster Bio Anti-CLIC1 Antibody catalog # A02397. Tested in WB,IHC,IF applications. This antibody reacts with Human,Mouse,Rat.
Application	IF, IHC, WB
Clonality	Polyclonal
Formulation	Rabbit IgG, 1mg/ml in PBS with 0.02% sodium azide, 50% glycerol, pH7.2
Storage Instructions	Store at -20°C for one year. For short term storage and frequent use, store at 4°C for up to one month. Avoid repeated freeze-thaw cycles.
Host	Rabbit
Uniprot ID	O00299

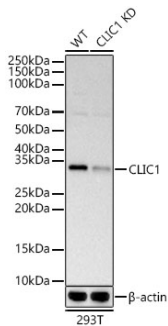
Technical Details

Immunogen	Recombinant Protein corresponding to a sequence within amino acids 42-241 of human CLIC1(NP_001279.2).
Isotype	IgG
Form	Liquid
Concentration	1 mg/ml
Purification	The antibody was affinity-purified from rabbit antiserum by affinity-chromatography using epitope-specific immunogen and the purity is > 95% (by SDS-PAGE).
Suggested Dilutions	WB: 1:500-1:2000 IHC: 1:50-1:200 IF: 1:10-1:100

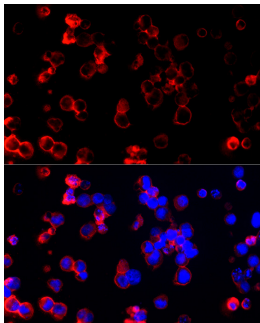
Anti-CLIC1 Antibody (A02397) Images



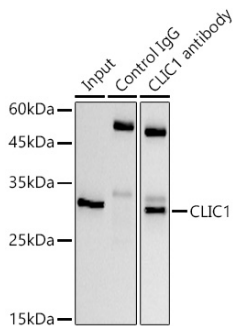
Western blot analysis of lysates from MCF7 cells, using CLIC1 pAb at 1:1000 dilution.



Western blot analysis of lysates from wild type(WT) and CLIC1 knockdown (KD) HeLa cells, using CLIC1 pAb at 1:1000 dilution.



Immunofluorescence analysis of K-562 cells using CLIC1 pAb at dilution of 1:200 (40x lens).



Immunoprecipitation analysis of 300 ug extracts of HeLa cells using 3 ug CLIC1 pAb.

Submit a product review to Biocompare.com

Submit a review of this product to Biocompare.com to receive a \$20 Amazon.com giftcard! Your reviews help your fellow scientists make the right decisions. Thank you for your contribution.



Anti-CLIC1 Antibody

For Research Use Only. Not for use in diagnostic procedures.