

Anti-Phospho-Casein Kinase I alpha (Y255) CSNK2A1 Antibody

Catalog Number: A02398Y255

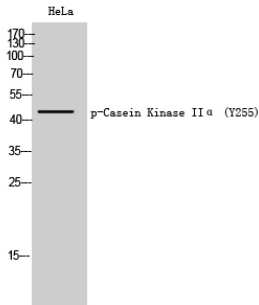
Overview

Product Name	Anti-Phospho-Casein Kinase I alpha (Y255) CSNK2A1 Antibody
Reactive Species	Human, Mouse, Rat
Description	Boster Bio Anti-Phospho-Casein Kinase I alpha (Y255) CSNK2A1 Antibody catalog # A02398Y255. Tested in WB, IHC, IF, ELISA applications. This antibody reacts with Human, Mouse, Rat.
Application	ELISA, IF, IHC, WB
Clonality	Polyclonal
Formulation	Liquid in PBS containing 50% glycerol, 0.5% stabilizing protein and 0.02% sodium azide. *This antibody is supplied in a stabilized formulation. Compatibility with conjugation reactions depends on the chemistry of the conjugation method used. For conjugation methods that are not compatible with the stabilizing components present in this formulation, a carrier-free antibody format is required.
Storage Instructions	Store at -20°C for one year. For short term storage and frequent use, store at 4°C for up to one month. Avoid repeated freeze-thaw cycles.
Host	Rabbit
Uniprot ID	P68400

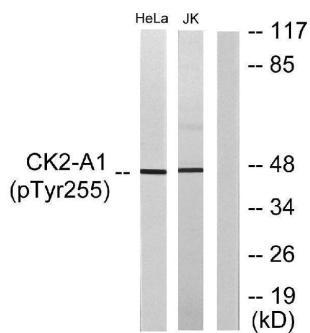
Technical Details

Immunogen	The antiserum was produced against synthesized peptide derived from human Casein Kinase II alpha around the phosphorylation site of Tyr255. AA range:221-270
Isotype	IgG
Form	Liquid
Concentration	1 mg/ml
Purification	The antibody was affinity-purified from rabbit antiserum by affinity-chromatography using epitope-specific immunogen.
Suggested Dilutions	WB 1:500-1:2000 IHC 1:100-1:300 ELISA 1:10000 IF 1:50-200

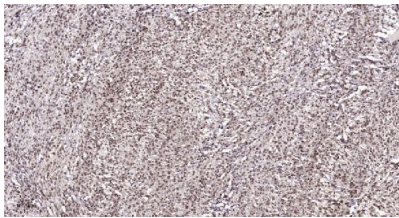
Anti-Phospho-Casein Kinase I alpha (Y255) CSNK2A1 Antibody (A02398Y255) Images



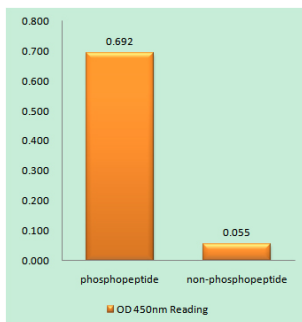
Western Blot analysis of HeLa cells using Phospho-Casein Kinase II alpha (Y255) Polyclonal Antibody cells nucleus extracted by Minute TM Cytoplasmic and Nuclear Fractionation kit .



Western blot analysis of lysates from HeLa cells and Jurkat cells, using Casein Kinase II alpha (Phospho-Tyr255) Antibody. The lane on the right is blocked with the phospho peptide.



Immunohistochemical analysis of paraffin-embedded human Colon cancer. 1, Antibody was diluted at 1:200 (4° overnight). 2, Tris-EDTA, pH9.0 was used for antigen retrieval. 3, Secondary antibody was diluted at 1:200 (room temperature, 45min).



Enzyme-Linked Immunosorbent Assay (Phospho-ELISA) for Immunogen Phosphopeptide (Phospho-left) and Non-Phosphopeptide (Phospho-right), using Casein Kinase II alpha (Phospho-Tyr255) Antibody

Submit a product review to Biocompare.com

Submit a review of this product to Biocompare.com to receive a \$20 Amazon.com giftcard! Your reviews help your fellow scientists make the right decisions. Thank you for your contribution.



Anti-Phospho-Casein Kinase I alpha (Y255) CSNK2A1 Antibody

For Research Use Only. Not for use in diagnostic procedures.