

## Anti-PCAF KAT2B Antibody

Catalog Number: A02403

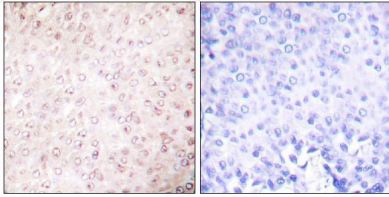
### Overview

|                      |  |
|----------------------|--|
| Product Name         | Anti-PCAF KAT2B Antibody   |
| Reactive Species     | Human, Mouse, Rat  |
| Description          | Boster Bio Anti-PCAF KAT2B Antibody catalog # A02403. Tested in WB, IHC, IF, ELISA applications. This antibody reacts with Human, Mouse, Rat.  |
| Application          | ELISA, IF, IHC, WB   |
| Clonality            | Polyclonal   |
| Formulation          | Liquid in PBS containing 50% glycerol, 0.5% stabilizing protein and 0.02% sodium azide.<br>*This antibody is supplied in a stabilized formulation.<br>Compatibility with conjugation reactions depends on the chemistry of the conjugation method used. For conjugation methods that are not compatible with the stabilizing components present in this formulation, a carrier-free antibody format is required. |
| Storage Instructions | Store at -20°C for one year. For short term storage and frequent use, store at 4°C for up to one month. Avoid repeated freeze-thaw cycles.   |
| Host                 | Rabbit   |
| Uniprot ID           | Q92831   |

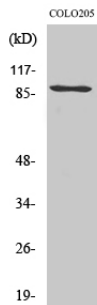
### Technical Details

|                     |  |
|---------------------|--|
| Immunogen           | The antiserum was produced against synthesized peptide derived from human p300/CBP. AA range:783-832 |
| Isotype             | IgG  |
| Form                | Liquid   |
| Concentration       | 1 mg/ml  |
| Purification        | Immunogen affinity purified  |
| Suggested Dilutions | WB 1:500-1:2000<br>IHC 1:100-1:300<br>ELISA 1:10000<br>IF 1:50-200                                   |

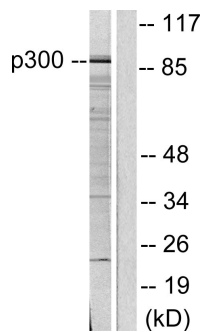
## Anti-PCAF KAT2B Antibody (A02403) Images



Immunohistochemistry analysis of paraffin-embedded human breast carcinoma tissue, using p300/CBP Antibody. The picture on the right is blocked with the synthesized peptide.



Western Blot analysis of various cells using PCAF Polyclonal Antibody cells nucleus extracted by Minute TM Cytoplasmic and Nuclear Fractionation kit .



Western blot analysis of lysates from COLO205 cells, using p300/CBP Antibody. The lane on the right is blocked with the synthesized peptide.

### Submit a product review to [Biocompare.com](https://www.biocompare.com)

Submit a review of this product to [Biocompare.com](https://www.biocompare.com) to receive a \$20 Amazon.com giftcard! Your reviews help your fellow scientists make the right decisions. Thank you for your contribution.



Anti-PCAF KAT2B Antibody

For Research Use Only. Not for use in diagnostic procedures.