

## Anti-Artemis DCLRE1C Antibody

Catalog Number: A02405

### About DCLRE1C

Artemis has a role in T and B lymphocyte immunodeficiency and in predisposition to lymphoma through the NHEJ pathway of DNA repair. DNA-PKcs regulates Artemis by both phosphorylation and complex formation to permit enzymatic activities that are critical for the hairpin-opening step of V(D)J recombination and for the 5' and 3' overhang processing in non-homologous DNA end joining.

### Overview

Product Name	Anti-Artemis DCLRE1C Antibody
Reactive Species	Human
Description	Boster Bio Anti-Artemis DCLRE1C Antibody (Catalog # A02405). Tested in ELISA, IHC, WB applications. This antibody reacts with Human.
Application	ELISA, IHC, WB
Clonality	Polyclonal
Formulation	0.02 M Potassium Phosphate, 0.15 M Sodium Chloride, pH 7.2, 0.01% (w/v) Sodium Azide
Storage Instructions	Store vial at -20°C prior to opening. Aliquot contents and freeze at -20°C or below for extended storage. Avoid cycles of freezing and thawing. Centrifuge product if not completely clear after standing at room temperature. This product is stable for several weeks at 4°C as an undiluted liquid. Dilute only prior to immediate use. Expiration date is one (1) year from date of opening. (Ship on dry ice.)
Host	Goat
Uniprot ID	Q96SD1

### Technical Details

Immunogen	This affinity purified antibody was prepared from whole goat serum produced by repeated immunizations with a synthetic peptide corresponding an internal region of Human ARTEMIS (DCLRE1C DNA cross-link repair 1C).
Predicted Reactive Species	Bovine, Pufferfish, Zebrafish
Isotype	IgG
Form	Liquid (sterile filtered)
Concentration	1.2 mg/mL by UV absorbance at 280 nm
Purification	This is an affinity purified antibody produced by immunoaffinity chromatography using the immunizing peptide after immobilization to a solid phase. This antibody detects a band of the

appropriate size in a number of different cell lines. However, it does not detect a band in cell lines that do not express artemis, such as the cell line CJ (see figure) and in an hTERT line (not shown).

**Suggested Dilutions**

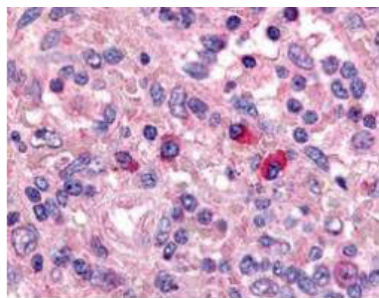
ELISA: 1:10,000 - 1:20,000

IHC: 1:1,000

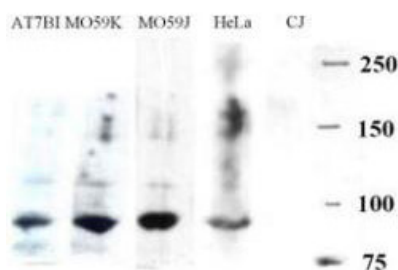
WB: 1:500 - 1:2,000

This affinity purified antibody has been tested for use in ELISA, immunohistochemistry and western blotting. Reactivity in other immunoassays is unknown. This antibody detects a band of approximately 90 kDa (predicted molecular weight: 78 kDa).

## Anti-Artemis DCLRE1C Antibody (A02405) Images



Boster's Affinity Purified anti-Artemis antibody was used at a 1:1000 dilution to detect Artemis by immunohistochemistry in human spleen. Positive staining of T cells and B lymphocytes is observed in thymus, lymph nodes and spleen. Tissue was formalin-fixed and paraffin embedded. Personal Communication, Alan Yen, LifeSpanBiosciences, Seattle, WA.



Western blot using Boster's Goat-anti-Artemis was used to detect Artemis. Lane 1: AT7BI cell lysates. Lane 2: MO59K cell lysates. Lane 3: MO59J cell lysates. Lane 4: HeLa cell lysates. Lane 5: CJ cell lysates. CJ is an Artemis deficient cell line and so no band is visible. Primary Antibody at 1:500 dilution. Signal was detected using standard techniques.

### Submit a product review to Biocompare.com

Submit a review of this product to Biocompare.com to receive a \$20 Amazon.com giftcard! Your reviews help your fellow scientists make the right decisions. Thank you for your contribution.



Anti-Artemis DCLRE1C Antibody

For Research Use Only. Not for use in diagnostic procedures.