

Anti-BRD2 Antibody

Catalog Number: A02412

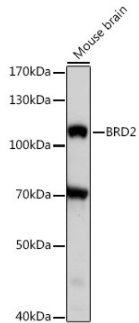
Overview

Product Name	Anti-BRD2 Antibody
Reactive Species	Human
Description	Boster Bio Anti-BRD2 Antibody catalog # A02412. Tested in WB,ICC,IHC,Flow Cytometry applications. This antibody reacts with Human.
Application	Flow Cytometry, IHC, ICC, WB
Clonality	Polyclonal
Formulation	Rabbit IgG, 1mg/ml in PBS with 0.02% sodium azide, 50% glycerol, pH7.2
Storage Instructions	Store at -20°C for one year. For short term storage and frequent use, store at 4°C for up to one month. Avoid repeated freeze-thaw cycles.
Host	Rabbit
Uniprot ID	P25440

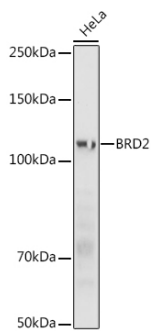
Technical Details

Immunogen	A synthetic peptide corresponding to a sequence within amino acids 301-400 of human BRD2 (NP_005095.1).
Isotype	IgG
Form	Liquid
Concentration	1 mg/ml
Purification	ProA affinity purified
Suggested Dilutions	WB: 1:500-1:2,000 ICC: 1:50-1:200 IHC: 1:50-1:200 FC: 1:50-1:100

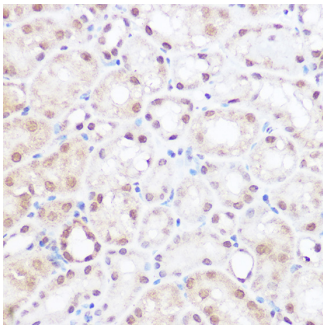
Anti-BRD2 Antibody (A02412) Images



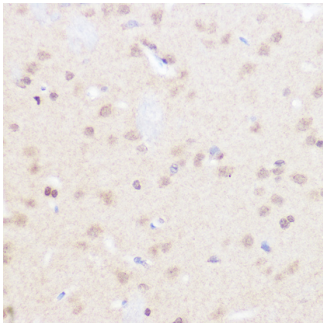
Western blot analysis of lysates from mouse brain, using BRD2 pAb at 1:1000 dilution.



Western blot analysis of lysates from HeLa cells, using BRD2 pAb at 1:1000 dilution.



Immunohistochemistry analysis of paraffin-embedded mouse kidney using BRD2 pAb at dilution of 1:50 (40x lens).



Immunohistochemistry analysis of paraffin-embedded rat brain using BRD2 pAb at dilution of 1:50 (40x lens).

Submit a product review to Biocompare.com

Submit a review of this product to Biocompare.com to receive a \$20 Amazon.com giftcard! Your reviews help your fellow scientists make the right decisions. Thank you for your contribution.



Anti-BRD2 Antibody

For Research Use Only. Not for use in diagnostic procedures.