

Anti-Alpha 1 microglobulin/AMBP Antibody Picoband®

Catalog Number: A02419-3

About AMBP

Protein AMBP is a protein that in humans is encoded by the AMBP gene. This gene encodes a complex glycoprotein secreted in plasma. The precursor is proteolytically processed into distinct functioning proteins: alpha-1-microglobulin, which belongs to the superfamily of lipocalin transport proteins and may play a role in the regulation of inflammatory processes, and bikunin, which is a urinary trypsin inhibitor belonging to the superfamily of Kunitz-type protease inhibitors and plays an important role in many physiological and pathological processes. This gene is located on chromosome 9 in a cluster of lipocalin genes.

Overview

Product Name	Anti-Alpha 1 microglobulin/AMBP Antibody Picoband®
Reactive Species	Human
Description	Boster Bio Anti-Alpha 1 microglobulin/AMBP Antibody Picoband® catalog # A02419-3. Tested in ELISA, IHC, WB applications. This antibody reacts with Human. The brand Picoband indicates this is a premium antibody that guarantees superior quality, high affinity, and strong signals with minimal background in Western blot applications. Only our best-performing antibodies are designated as Picoband, ensuring unmatched performance.
Application	ELISA, IHC, WB
Clonality	Polyclonal
Formulation	Each vial contains 4mg Trehalose, 0.9mg NaCl, 0.2mg Na ₂ HPO ₄ , 0.05mg NaN ₃ .
Storage Instructions	Store at -20°C for one year from date of receipt. After reconstitution, at 4°C for one month. It can also be aliquotted and stored frozen at -20°C for six months. Avoid repeated freeze-thaw cycles.
Host	Rabbit
Uniprot ID	P02760

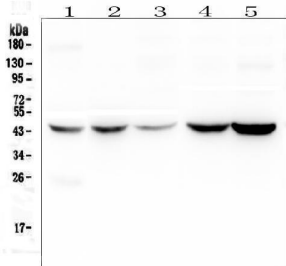
Technical Details

Immunogen	E. coli-derived human Alpha 1 microglobulin recombinant protein (Position: G20-V203).
Recommended Detection Systems	Boster recommends Enhanced Chemiluminescent Kit with anti-Rabbit IgG (EK1002) for Western blot, and HRP Conjugated anti-Rabbit IgG Super Vision Assay Kit (SV0002-1) for IHC(P).
Cross Reactivity	No cross-reactivity with other proteins.
Isotype	Rabbit IgG
Form	Lyophilized
Concentration	Adding 0.2 ml of distilled water will yield a concentration of 500 ug/ml.

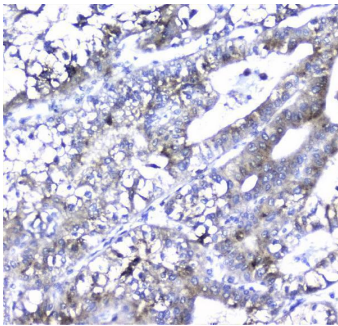
Suggested Dilutions

Western blot, 0.1-0.5ug/ml
Immunohistochemistry (Paraffin-embedded Section), 0.5-1ug/ml
ELISA, 0.1-0.5ug/ml

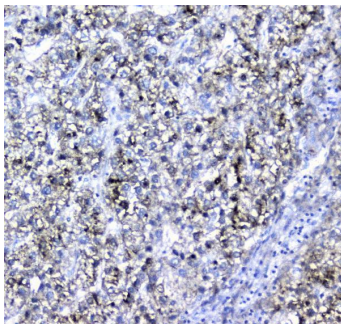
Anti-Alpha 1 microglobulin/AMBP Antibody Picoband® (A02419-3) Images



Western blot analysis of Alpha 1 microglobulin using anti-Alpha 1 microglobulin antibody (A02419-3). Electrophoresis was performed on a 5-20% SDS-PAGE gel at 70V (Stacking gel) / 90V (Resolving gel) for 2-3 hours. The sample well of each lane was loaded with 50ug of sample under reducing conditions. Lane 1: human placenta tissue lysates, Lane 2: human HEP-2 whole cell lysate, Lane 3: human Hela whole cell lysate, Lane 4: human A549 whole cell lysate, Lane 5: human PANC-1 whole cell lysate. After Electrophoresis, proteins were transferred to a Nitrocellulose membrane at 150mA for 50-90 minutes. Blocked the membrane with 5% Non-fat Milk/ TBS for 1.5 hour at RT. The membrane was incubated with rabbit anti-Alpha 1 microglobulin antigen affinity purified polyclonal antibody (Catalog # A02419-3) at 0.5 ug/mL overnight at 4°C, then washed with TBS-0.1%Tween 3 times with 5 minutes each and probed with a goat anti-rabbit IgG-HRP secondary antibody at a dilution of 1:10000 for 1.5 hour at RT. The signal is developed using an Enhanced Chemiluminescent detection (ECL) kit (Catalog # EK1002) with Tanon 5200 system. A specific band was detected for Alpha 1 microglobulin at approximately 45KD. The expected band size for Alpha 1 microglobulin is at 39KD.



IHC analysis of Alpha 1 microglobulin using anti-Alpha 1 microglobulin antibody (A02419-3). Alpha 1 microglobulin was detected in paraffin-embedded section of human liver cancer tissue. Heat mediated antigen retrieval was performed in citrate buffer (pH6, epitope retrieval solution) for 20 mins. The tissue section was blocked with 10% goat serum. The tissue section was then incubated with 2ug/ml rabbit anti-Alpha 1 microglobulin Antibody (A02419-3) overnight at 4°C. Biotinylated goat anti-rabbit IgG was used as secondary antibody and incubated for 30 minutes at 37°C. The tissue section was developed using Streptavidin-Biotin-Complex (SABC)(Catalog # SA1022) with DAB as the chromogen.



IHC analysis of Alpha 1 microglobulin using anti-Alpha 1 microglobulin antibody (A02419-3). Alpha 1 microglobulin was detected in paraffin-embedded section of human liver cancer tissue. Heat mediated antigen retrieval was performed in citrate buffer (pH6, epitope retrieval solution) for 20 mins. The tissue section was blocked with 10% goat serum. The tissue section was then incubated with 2ug/ml rabbit anti-Alpha 1 microglobulin Antibody (A02419-3) overnight at 4°C. Biotinylated goat anti-rabbit IgG was used as secondary antibody and incubated for 30 minutes at 37°C. The tissue section was developed using Streptavidin-Biotin-Complex (SABC)(Catalog # SA1022) with DAB as the chromogen.

Submit a product review to Biocompare.com

Submit a review of this product to Biocompare.com to receive a \$20 Amazon.com giftcard! Your reviews help your fellow scientists make the right decisions. Thank you for your contribution.



Anti-Alpha 1 microglobulin/AMBP Antibody

For Research Use Only. Not for use in diagnostic procedures.