

Anti-SMMHC/MYH11 Antibody

Catalog Number: A02422-2

About MYH11

MYH11 is a smooth muscle myosin belonging to the myosin heavy chain family which function as major contractile proteins. MYH11 is involved in a pericentric inversion of chromosome 16 (inv(16)(p13q22)) which produces a chimeric transcript consisting of the N terminus of CBFb and the C-terminal portion MYH11. This chromosomal rearrangement is associated with acute myeloid leukemia of the M4Eo subtype. References citing this antibody(1) Mandoli A, Singh AA, Jansen PWTC, Wierenga ATJ, Riahi H, Franci G, Prange K, Saeed S, Vellenga E, Vermeulen M, Stunnenberg HG and Martens JHA (2013) CBFb-YH11/RUNX1 together with a compendium of hematopoietic regulators, chromatin modifiers and basal transcription factors occupies self-renewal genes in inv(16) acute myeloid leukemia. Leukemia: 1-9.

Overview

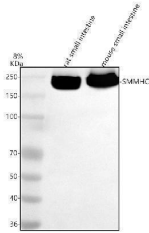
Product Name	Anti-SMMHC/MYH11 Antibody
Reactive Species	Human, Mouse, Rat
Description	Boster Bio Anti-SMMHC/MYH11 Antibody catalog # A02422-2. Tested in WB, IHC, ICC, IF, ELISA applications. This antibody reacts with Human, Mouse, Rat.
Application	ELISA, IF, IHC, ICC, WB
Clonality	Polyclonal
Formulation	500 ug/ml antibody with PBS, 0.02% NaN ₃ , 1 mg stabilizing protein and 50% glycerol *This antibody is supplied in a stabilized formulation. Compatibility with conjugation reactions depends on the chemistry of the conjugation method used. For conjugation methods that are not compatible with the stabilizing components present in this formulation, a carrier-free antibody format is required.
Storage Instructions	12 months from date of receipt at -20°C as supplied. 6 months at 2 to 8°C after reconstitution. Avoid repeated freezing and thawing.
Host	Rabbit
Uniprot ID	P35749

Technical Details

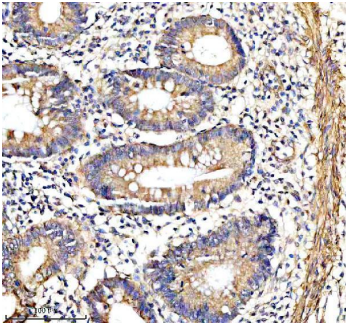
Immunogen	E.coli-derived human SMMHC/MYH11 recombinant protein (Position: E1206-S1315).
Form	Liquid
Concentration	500 ug/ml
Purification	Immunogen affinity purified.
Suggested Dilutions	Western blot, 1:500-2000

	Immunohistochemistry, 1:50-400 Immunocytochemistry/Immunofluorescence, 1:50-400 ELISA, 1:100-1000
--	---

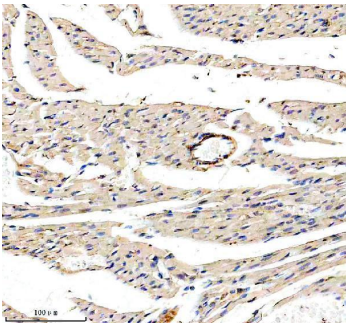
Anti-SMMHC/MYH11 Antibody (A02422-2) Images



Western blot analysis of SMMHC/MYH11 using anti-SMMHC/MYH11 antibody (A02422-2). Electrophoresis was performed on a 10% SDS-PAGE gel at 80V (Stacking gel) / 120V (Resolving gel) for 2 hours. The sample well of each lane was loaded with 30 ug of sample under reducing conditions. Lane 1: rat small intestine tissue lysates, Lane 2: mouse small intestine tissue lysates. After electrophoresis, proteins were transferred to a nitrocellulose membrane at 150 mA for 50-90 minutes. Blocked the membrane with 5% non-fat milk/TBS for 1.5 hour at RT. The membrane was incubated with rabbit anti-SMMHC/MYH11 antigen affinity purified polyclonal antibody (A02422-2) at 1:1000 overnight at 4°C, then washed with TBS-0.1%Tween 3 times with 5 minutes each and probed with a goat anti-rabbit IgG-HRP secondary antibody at a dilution of 1:5000 for 1.5 hour at RT. The signal is developed using an ECL Plus Western Blotting Substrate (Catalog # AR1196-200) with Tanon 5200 system. A specific band was detected for SMMHC/MYH11 at approximately 250 kDa. The expected band size for SMMHC/MYH11 is at 228 kDa.



IHC analysis of SMMHC/MYH11 using anti-SMMHC/MYH11 antibody (A02422-2). SMMHC/MYH11 was detected in a paraffin-embedded section of human appendix tissue. Heat mediated antigen retrieval was performed in EDTA buffer (pH 8.0, epitope retrieval solution). The tissue section was blocked with 10% goat serum. The tissue section was then incubated with 1:100 rabbit anti-SMMHC/MYH11 Antibody (A02422-2) overnight at 4°C. Peroxidase Conjugated Goat Anti-rabbit IgG was used as secondary antibody and incubated for 30 minutes at 37°C. The tissue section was developed using HRP Conjugated Rabbit IgG Super Vision Assay Kit (Catalog # SV0002) with DAB as the chromogen.



IHC analysis of SMMHC/MYH11 using anti-SMMHC/MYH11 antibody (A02422-2). SMMHC/MYH11 was detected in a paraffin-embedded section of rat heart tissue. Heat mediated antigen retrieval was performed in EDTA buffer (pH 8.0, epitope retrieval solution). The tissue section was blocked with 10% goat serum. The tissue section was then incubated with 1:100 rabbit anti-SMMHC/MYH11 Antibody (A02422-2) overnight at 4°C. Peroxidase Conjugated Goat Anti-rabbit IgG was used as secondary antibody and incubated for 30 minutes at 37°C. The tissue section was developed using HRP Conjugated Rabbit IgG Super Vision Assay Kit (Catalog # SV0002) with DAB as the chromogen.

Submit a product review to [Biocompare.com](https://www.biocompare.com)

Submit a review of this product to [Biocompare.com](https://www.biocompare.com) to receive a \$20 Amazon.com giftcard! Your reviews help your fellow scientists make the right decisions. Thank you for your contribution.



Anti-SMMHC/MYH11 Antibody

For Research Use Only. Not for use in diagnostic procedures.