

Anti-EBP50 SLC9A3R1 Antibody

Catalog Number: A02427

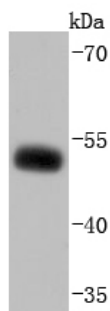
Overview

Product Name	Anti-EBP50 SLC9A3R1 Antibody
Reactive Species	Human, Rat
Description	Boster Bio Anti-EBP50 SLC9A3R1 Antibody catalog # A02427. Tested in WB,IHC applications. This antibody reacts with Human,Rat.
Application	IHC, WB
Clonality	Polyclonal
Formulation	Rabbit IgG, 1mg/ml in PBS with 0.02% sodium azide, 50% glycerol, pH7.2
Storage Instructions	Store at -20°C for one year. For short term storage and frequent use, store at 4°C for up to one month. Avoid repeated freeze-thaw cycles.
Host	Rabbit
Uniprot ID	O14745

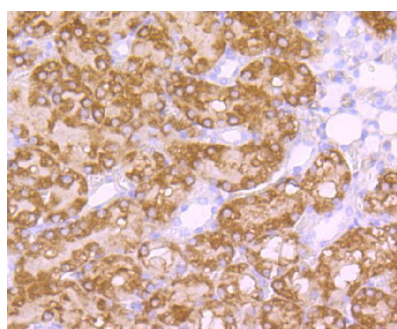
Technical Details

Immunogen	recombinant protein
Isotype	IgG
Form	Liquid
Concentration	1 mg/ml
Purification	ProA affinity purified
Suggested Dilutions	WB: 1:1,000-1:2,000 IHC: 1:50-1:200

Anti-EBP50 SLC9A3R1 Antibody (A02427) Images



Western blot analysis of EBP50 on MCF-7 cells lysates using anti-EBP50 antibody at 1/1,000 dilution.



Immunohistochemical analysis of paraffin-embedded rat kidney tissue using anti-EBP50 antibody. Counter stained with hematoxylin.

Submit a product review to [Biocompare.com](https://www.biocompare.com)

Submit a review of this product to [Biocompare.com](https://www.biocompare.com) to receive a \$20 Amazon.com giftcard! Your reviews help your fellow scientists make the right decisions. Thank you for your contribution.



Anti-EBP50 SLC9A3R1 Antibody

For Research Use Only. Not for use in diagnostic procedures.