

Anti-PHLPP1 Antibody

Catalog Number: A02430-2

About PHLPP1

PHLPP1 is a member of the serine/threonine phosphatase family, which are important regulators of Akt serine-threonine kinases (AKT1, AKT2, AKT3) and conventional/novel protein kinase C (PKC) isoforms. PHLPP1 and PHLPP2 have a similar domain structure and have been shown to dephosphorylate and inactivate, distinct Akt isoforms, at one of the two critical phosphorylation sites required for activation: Serine473. PHLPP2 dephosphorylates AKT1 and AKT3, whereas PHLPP1 is specific for AKT2 and AKT3. PHLPP1 promotes apoptosis and may act as a tumor suppressor. Increased expression of PHLPP1 may also play a role in obesity and type 2 diabetes by interfering with Akt-mediated insulin signaling.

Overview

Product Name	Anti-PHLPP1 Antibody
Reactive Species	Human
Description	Boster Bio Anti-PHLPP1 Antibody (Catalog # A02430-2). Tested in ELISA, WB, ICC, IF applications. This antibody reacts with Human.
Application	ELISA, IF, ICC, WB
Clonality	Polyclonal
Formulation	PHLPP1 Antibody is supplied in PBS containing 0.02% sodium azide.
Storage Instructions	PHLPP1 antibody can be stored at 4°C for three months and -20°C, stable for up to one year. Avoid repeated freeze-thaw cycles. Antibodies should not be exposed to prolonged high temperatures.
Host	Rabbit
Uniprot ID	O60346

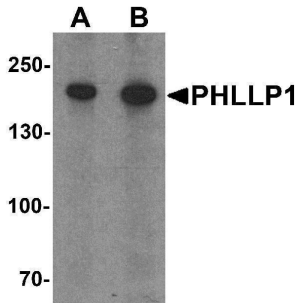
Technical Details

Immunogen	PHLPP1 antibody was raised against an 18 amino acid synthetic peptide near the amino terminus of human PHLPP1. The immunogen is located within amino acids 250 - 300 of PHLPP1.
Predicted Reactive Species	Bovine
Cross Reactivity	At least four isoforms are known to exist; this antibody will only detect the largest isoform. PHLPP1 antibody is predicted to not cross react with PHLPP2.
Isotype	IgG
Form	Liquid
Concentration	1 mg/mL
Purification	PHLPP1 Antibody is affinity chromatography purified via peptide column.

Suggested Dilutions

PHLPP1 antibody can be used for detection of PHLPP1 by Western blot at 1 - 2 ug/mL.
Antibody validated: Western Blot in human samples; Immunocytochemistry in human samples and Immunofluorescence in human samples. All other applications and species not yet tested. Optimal dilutions for each application should be determined by the researcher.

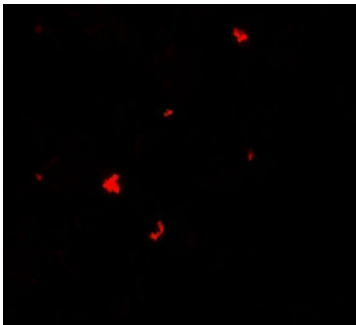
Anti-PHLPP1 Antibody (A02430-2) Images



Western blot analysis of PHLPP1 in SW480 cell lysate with PHLPP1 antibody at (A) 1 and (B) 2 ug/mL.



Immunocytochemistry of PHLPP1 in SW480 cells with PHLPP1 antibody at 2.5 ug/ml.



Immunofluorescence of PHLPP1 in SW480 cells with PHLPP1 antibody at 5 ug/ml.

Submit a product review to [Biocompare.com](https://www.biocompare.com)

Submit a review of this product to [Biocompare.com](https://www.biocompare.com) to receive a \$20 Amazon.com giftcard! Your reviews help your fellow scientists make the right decisions. Thank you for your contribution.



Anti-PHLPP1 Antibody

For Research Use Only. Not for use in diagnostic procedures.