

Anti-14-3-3 beta YWHAB Antibody

Catalog Number: A02431

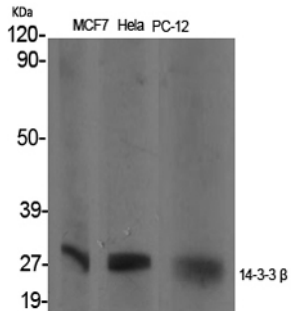
Overview

Product Name	Anti-14-3-3 beta YWHAB Antibody
Reactive Species	Human, Mouse, Rat
Description	Boster Bio Anti-14-3-3 beta YWHAB Antibody catalog # A02431. Tested in WB, IHC, IF, ELISA applications. This antibody reacts with Human, Mouse, Rat.
Application	ELISA, IF, IHC, WB
Clonality	Polyclonal
Formulation	Liquid in PBS containing 50% glycerol, 0.5% stabilizing protein and 0.02% sodium azide. *This antibody is supplied in a stabilized formulation. Compatibility with conjugation reactions depends on the chemistry of the conjugation method used. For conjugation methods that are not compatible with the stabilizing components present in this formulation, a carrier-free antibody format is required.
Storage Instructions	Store at -20°C for one year. For short term storage and frequent use, store at 4°C for up to one month. Avoid repeated freeze-thaw cycles.
Host	Rabbit
Uniprot ID	P31946

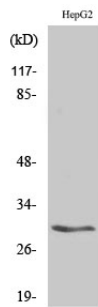
Technical Details

Immunogen	The antiserum was produced against synthesized peptide derived from human 14-3-3 beta. AA range:41-90
Isotype	IgG
Form	Liquid
Concentration	1 mg/ml
Purification	Immunogen affinity purified
Suggested Dilutions	WB 1:500-1:2000 IHC 1:100-1:300 IF 1:200-1:1000 ELISA 1:10000

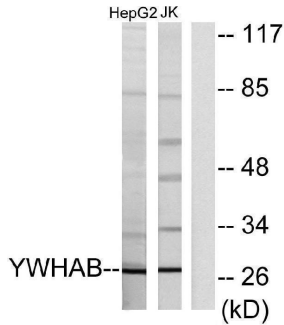
Anti-14-3-3 beta YWHAB Antibody (A02431) Images



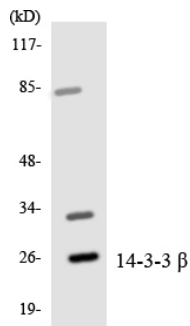
Western Blot analysis of various cells using 14-3-3 beta Polyclonal Antibody



Western Blot analysis of Jurkat cells using 14-3-3 beta Polyclonal Antibody

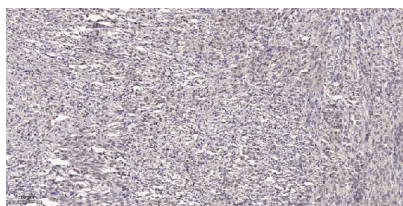


Western blot analysis of lysates from HepG2 and Jurkat cells, using 14-3-3 beta Antibody. The lane on the right is blocked with the synthesized peptide.



Western blot analysis of the lysates from HepG2 cells using 14-3-3 beta antibody.

Immunohistochemical analysis of paraffin-embedded human small intestinal carcinoma tissue. 1, primary Antibody was diluted at 1:200 (4° overnight). 2, Sodium citrate pH 6.0 was used for antigen retrieval (>98°C, 20min). 3, Secondary antibody was diluted at 1:200



Submit a product review to Biocompare.com

Submit a review of this product to Biocompare.com to receive a \$20 Amazon.com giftcard! Your reviews help your fellow scientists make the right decisions. Thank you for your contribution.



Anti-14-3-3 beta YWHAB Antibody

For Research Use Only. Not for use in diagnostic procedures.